

**ELECTRONIC COPY**

## LABORATORY GROWN DIAMOND REPORT

|                         |                          |
|-------------------------|--------------------------|
| April 1, 2025           |                          |
| IGI Report Number       | LG695522808              |
| Description             | LABORATORY GROWN DIAMOND |
| Shape and Cutting Style | ROUND BRILLIANT          |
| Measurements            | 9.12 - 9.17 X 5.49 MM    |

## GRADING RESULTS

|               |             |
|---------------|-------------|
| Carat Weight  | 2.81 CARATS |
| Color Grade   | D           |
| Clarity Grade | VS 2        |
| Cut Grade     | IDEAL       |

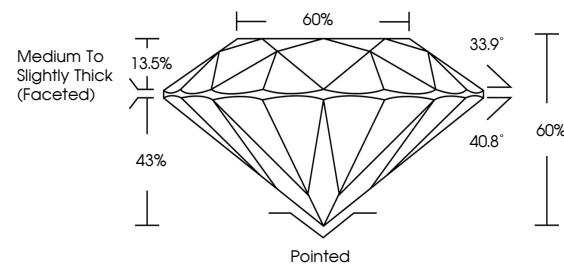
### ADDITIONAL GRADING INFORMATION

|                |                                                                                                 |
|----------------|-------------------------------------------------------------------------------------------------|
| Polish         | EXCELLENT                                                                                       |
| Symmetry       | EXCELLENT                                                                                       |
| Fluorescence   | NONE                                                                                            |
| Inscription(s) |  LG695522808 |

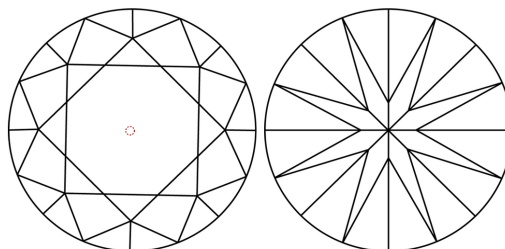
Comments: This Laboratory Grown Diamond was created by Chemical Vapor Deposition (CVD) growth process.  
Type IIa

LG695522808  
Report verification at [igi.org](https://igi.org)

## PROPORTIONS

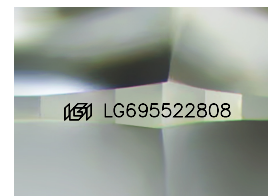


## CLARITY CHARACTERISTICS



## KEY TO SYMBOLS

Red symbols indicate internal characteristics.  
Green symbols indicate external characteristics.



Sample Image Used

## COLOR

D E F G H I J Faint Very Light Light

## CLARITY

IF      WS<sup>1-2</sup>      VS<sup>1-2</sup>      S<sup>1-2</sup>      |<sup>1-3</sup>

|                        |                                |                           |                      |          |
|------------------------|--------------------------------|---------------------------|----------------------|----------|
| Internally<br>Flawless | Very Very<br>Slightly Included | Very<br>Slightly Included | Slightly<br>Included | Included |
|------------------------|--------------------------------|---------------------------|----------------------|----------|

## LABORATORY GROWN DIAMOND REPORT



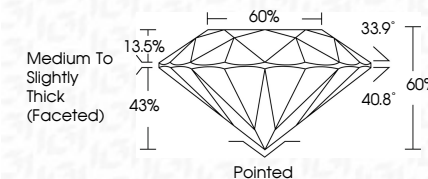
|                         |                          |
|-------------------------|--------------------------|
| April 1, 2025           |                          |
| IGI Report Number       | LG695522808              |
| Description             | LABORATORY GROWN DIAMOND |
| Shape and Cutting Style | ROUND BRILLIANT          |
| Measurements            | 9.12 - 9.17 X 5.49 MM    |

## GRADING RESULTS

|               |             |
|---------------|-------------|
| Carat Weight  | 2.81 CARATS |
| Color Grade   | D           |
| Clarity Grade | VS 2        |
| Cut Grade     | IDEAL       |

### ADDITIONAL GRADING INFORMATION

|                                                                                                                               |                                                                                                 |
|-------------------------------------------------------------------------------------------------------------------------------|-------------------------------------------------------------------------------------------------|
| Polish                                                                                                                        | EXCELLENT                                                                                       |
| Symmetry                                                                                                                      | EXCELLENT                                                                                       |
| Fluorescence                                                                                                                  | NONE                                                                                            |
| Inscription(s)                                                                                                                |  LG695522808 |
| <p>Comments: This Laboratory Grown Diamond was created by Chemical Vapor Deposition (CVD) growth process.</p> <p>Type IIa</p> |                                                                                                 |



© IGI 2020, International Gemological Institute

FD - 10 20

**www.igi.org**

THIS DOCUMENT WAS PRODUCED WITH THE FOLLOWING SECURITY MEASURES: SPECIAL DOCUMENT PAPER, INK SCREENS, WATERMARK, BACKGROUND DESIGNS, HOLOGRAM AND OTHER SECURITY FEATURES NOT LISTED AND DO EXCEED DOCUMENT SECURITY INDUSTRY GUIDELINES

|                           |              |                     |       |           |       |        |                                    |          |           |           |              |                  |
|---------------------------|--------------|---------------------|-------|-----------|-------|--------|------------------------------------|----------|-----------|-----------|--------------|------------------|
| April 1, 2026             | 2.81 CARATS  | D                   | VS 2  | IDEAL     | 60%   | 60%    | Medium to Slightly Thick (Faceted) | Polished | EXCELLENT | EXCELLENT | NONE         | 1691 LG-69622808 |
| GI Report No. LG-69622808 | Color Grade  | Clarity Grade       | Depth | Cut Grade | Table | Girdle |                                    | Culet    | Polish    | Symmetry  | Fluorescence | Inscriptions(s)  |
| ROUND BRILLIANT           | Carat Weight | 12 - 5.17 X 5.49 MM |       |           |       |        |                                    |          |           |           |              |                  |

Comments:  
 Created by: Cheryl Diamond was  
 treated by Chemical Vapor Deposition  
 (CVD) growth process.  
 Type IIa