

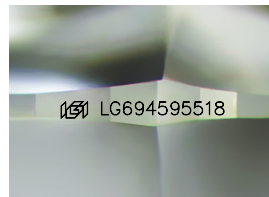
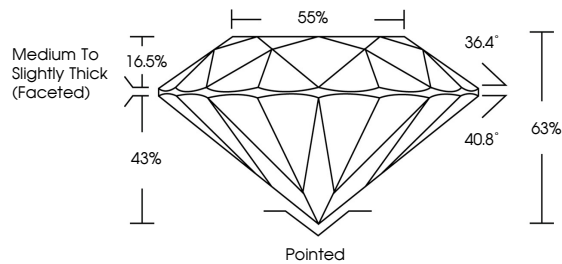


**INTERNATIONAL
GEMOLOGICAL
INSTITUTE**

ELECTRONIC COPY

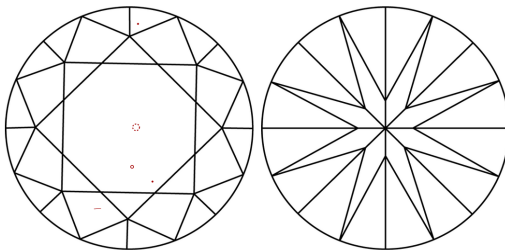
LG694595518
Report verification at [igi.org](https://www.igi.org)

PROPORTIONS



Sample Image Used

CLARITY CHARACTERISTICS



KEY TO SYMBOLS

Red symbols indicate internal characteristics.
Green symbols indicate external characteristics.

COLOR

D E F G H I J Faint Very Light Light

CLARITY

IF WS¹⁻² VS¹⁻² SI¹⁻² |¹⁻³

Internally Flawless	Very Very Slightly Included	Very Slightly Included	Slightly Included	Included
------------------------	--------------------------------	---------------------------	----------------------	----------



March 29, 2025

IGI Report Number **LG694595518**

Description	LABORATORY GROWN DIAMOND
-------------	--------------------------

Shape and Cutting Style **ROUND BRILLIANT**

Measurements	10.87 - 10.95 X 6.88 MM
--------------	-------------------------

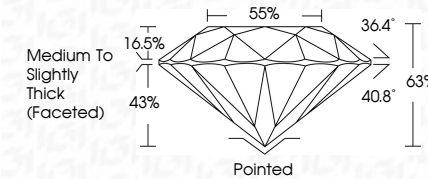
GRADING RESULTS

Carat Weight **5.06 CARATS**

Color Grade	E
-------------	---

Clarity Grade VS 1

Cut Grade **EXCELLENT**



ADDITIONAL GRADING INFORMATION

Polish **EXCELLENT**Symmetry **EXCELLENT**Fluorescence **NONE**Inscription(s) LG694595518

Comments: This Laboratory Grown Diamond was created by Chemical Vapor Deposition (CVD) growth process.
Type IIa



IG



© IGI 2020, International Gemological Institute

FD - 10 20



THIS DOCUMENT WAS PRODUCED WITH THE FOLLOWING SECURITY MEASURES: SPECIAL DOCUMENT PAPER, INK SCREENS, WATERMARK, BACKGROUND DESIGNS, HOLOGRAM AND OTHER SECURITY FEATURES NOT LISTED AND DO EXCEED DOCUMENT SECURITY INDUSTRY GUIDELINES

www.igi.org

March 29, 2025	10.87 - 10.95 X 4.88 MM	Color Grade	Vs 1	5.06 CARATS
IGI Report No G59495518		Carat Weight	EXCELLENT	
ROUND BRILLIANT		Cut Grade	65%	
		Depth	65%	
		Table	Medium to Slightly Thick (Faceted)	
		Girdle	Polished	
		Culet	EXCELLENT	
		Polish	EXCELLENT	
		Symmetry	NONE	
		Fluorescence	1891 G59495518	
		Inscription(s)		
		Comments:		
		This Laboratory Grown Diamond was created by Chemical Vapor Deposition (CVD) growth process.		
		Type Iia		