

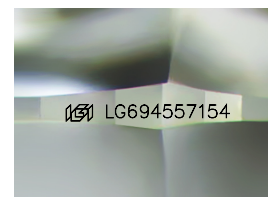
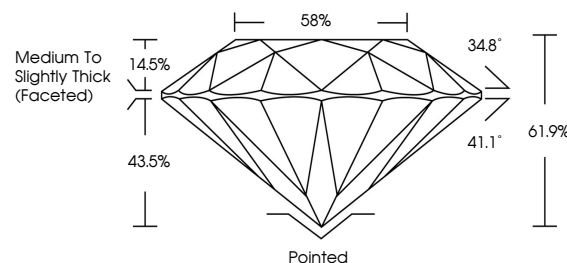


**ELECTRONIC COPY**

## LABORATORY GROWN DIAMOND REPORT

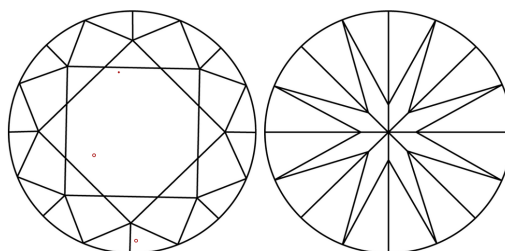
LG694557154  
Report verification at [igi.org](https://igi.org)

## PROPORTIONS



Sample Image Used

## CLARITY CHARACTERISTICS



### KEY TO SYMBOLS

Red symbols indicate internal characteristics.  
Green symbols indicate external characteristics.

## COLOR

D E F G H I J Faint Very Light Light

## CLARITY

IF WS<sup>1-2</sup> VS<sup>1-2</sup> SI<sup>1-2</sup> |<sup>1-3</sup>

Internally Flawless	Very Very Slightly Included	Very Slightly Included	Slightly Included	Included
------------------------	--------------------------------	---------------------------	----------------------	----------

## LABORATORY GROWN DIAMOND REPORT



March 26, 2025

IGI Report Number **LG694557154**Description **LABORATORY GROWN DIAMOND**Shape and Cutting Style **ROUND BRILLIANT**

Measurements 8.74 - 8.81 X 5.43 MM

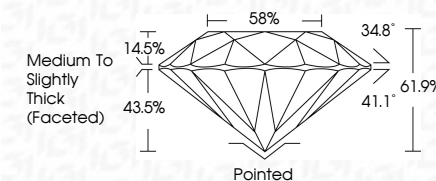
## GRADING RESULTS

Carat Weight **2.56 CARATS**

Color Grade	D
-------------	---

Clarity Grade VS 1

Cut Grade **IDEAL**



### ADDITIONAL GRADING INFORMATION

Polish **EXCELLENT**Symmetry **EXCELLENT**Fluorescence **NONE**Inscription(s)  LG694557154

Comments: This Laboratory Grown Diamond was created by Chemical Vapor Deposition (CVD) growth process.

Type IIa



© IGI 2020, International Gemological Institute

FD - 10 20

**www.igi.org**



THIS DOCUMENT WAS PRODUCED WITH THE FOLLOWING SECURITY MEASURES: SPECIAL DOCUMENT PAPER, INK SCREENS, WATERMARK, BACKGROUND DESIGNS, HOLOGRAM AND OTHER SECURITY FEATURES NOT LISTED AND DO EXCEED DOCUMENT SECURITY INDUSTRY GUIDELINE

March 26, 2026	GI Report No. LG594657154	2.66 CARATS	D	VS 1	IDEAL	61.1%	86%	Medium to Slightly Thick (Faceted)	Polished	NONE	1691 LG594657154	Comments: Created by Crown Diamond was treated by Chemical Vapor Deposition (CVD) growth process. Type IIa
ROUND BRILLIANT		7.74 - 8.81 X 5.43 MM	Color Grade	Clarity Grade	Depth	Table	Girdle		Culet			
		Carat Weight	Color Grade	Clarity Grade	Cut Grade	Table	Girdle		Symmetry	Fluorescence	Inscriptions(s)	