

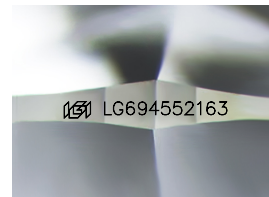
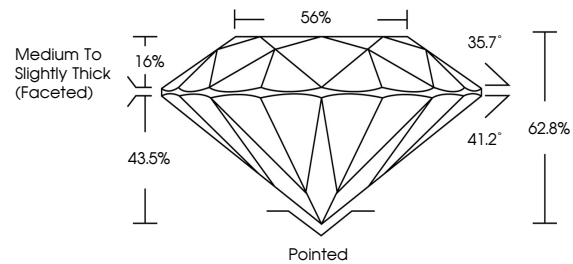


**INTERNATIONAL
GEMOLOGICAL
INSTITUTE**

ELECTRONIC COPY

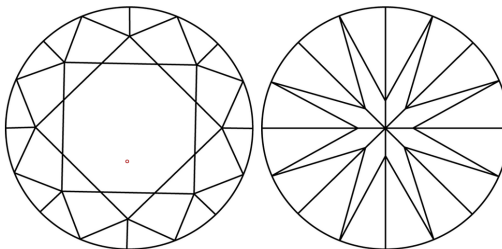
LG694552163
Report verification at igi.org

PROPORTIONS



Sample Image Used

CLARITY CHARACTERISTICS



KEY TO SYMBOLS

Red symbols indicate internal characteristics.
Green symbols indicate external characteristics.

COLOR

D E F G H I J Faint Very Light Light

CLARITY

IF WS¹⁻² VS¹⁻² SI¹⁻² |¹⁻³

Internally Flawless	Very Very Slightly Included	Very Slightly Included	Slightly Included	Included
------------------------	--------------------------------	---------------------------	----------------------	----------



March 27, 2025

IGI Report Number **LG694552163**

Description	LABORATORY GROWN DIAMOND
-------------	--------------------------

Shape and Cutting Style **ROUND BRILLIANT**

Measurements 10.16 - 10.19 X 6.39 MM

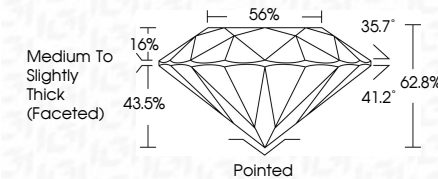
GRADING RESULTS

Carat Weight **4.08 CARATS**

Color Grade	E
-------------	---

Clarity Grade VS 1

Cut Grade **EXCELLENT**



ADDITIONAL GRADING INFORMATION

Polish **EXCELLENCE**Symmetry **EXCELLENCE**

Fluorescence NONI

Inscription(s)  LG69455216

Comments: This Laboratory Grown Diamond was created by Chemical Vapor Deposition (CVD) growth process.
Type IIa



IG



© IGI 2020, International Gemological Institute

FD - 10 20

www.igi.org

THIS DOCUMENT WAS PRODUCED WITH THE FOLLOWING SECURITY MEASURES: SPECIAL DOCUMENT PAPER, INK SCREENS, WATERMARK, BURNED AND DEBRIS, LIPS, SCRAM, AND OTHER SECURITY FEATURES. A LIMITED, AND DO NOT POST, SUCH AS, FOR EXAMPLE, IN THE CASE OF A

March 27, 2026	GI Report No. LG04552163	4
ROUND BRILLIANT	10.16 - 10.19 X 6.59 MM	
Carat Weight		
Color Grade		
Clarity Grade		
Cut Grade		
Depth		
Table		
Girdle		
Culet		Medium Thick
Polish		
Symmetry		
Fluorescence		
Inscription(s)		
Comments:		168
<p>Comments: Chemically Grown Diamond Treated by Chemical Vapor (CVD) growth process. Type IIa</p>		