

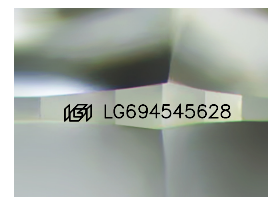
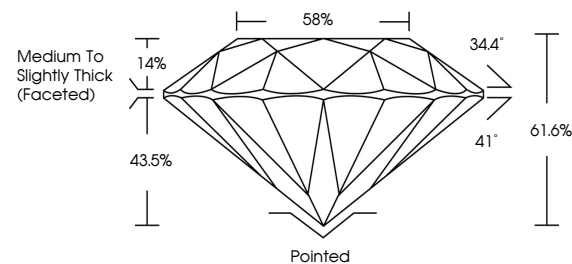


ELECTRONIC COPY

LABORATORY GROWN DIAMOND REPORT

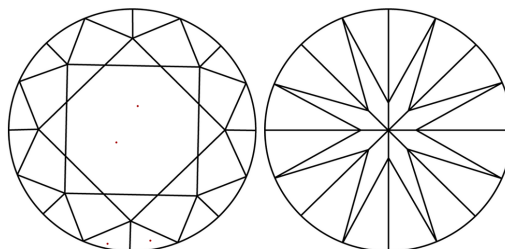
LG694545628
Report verification at igi.org

PROPORTIONS



Sample Image Used

CLARITY CHARACTERISTICS



KEY TO SYMBOLS

Red symbols indicate internal characteristics.
Green symbols indicate external characteristics.

COLOR

D E F G H I J Faint Very Light Light

CLARITY

IF WS¹⁻² VS¹⁻² SI¹⁻² |¹⁻³

Internally Flawless	Very Very Slightly Included	Very Slightly Included	Slightly Included	Included
------------------------	--------------------------------	---------------------------	----------------------	----------



© IGI 2020, International Gemological Institute

FD - 10 20

www.igi.org

LABORATORY GROWN DIAMOND REPORT



March 27, 2025

IGI Report Number **LG694545628**Description **LABORATORY GROWN DIAMOND**Shape and Cutting Style **ROUND BRILLIANT**

Measurements	10.99 - 11.06 X 6.78 MM
--------------	-------------------------

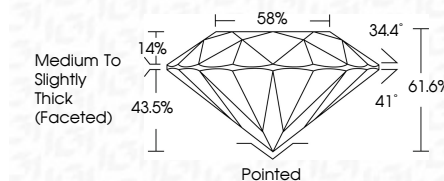
GRADING RESULTS

Carat Weight **5.08 CARATS**

Color Grade E

Clarity Grade VVS 2

Cut Grade **IDEAL**



ADDITIONAL GRADING INFORMATION

Polish **EXCELLENT**Symmetry **EXCELLENT**Fluorescence **NONE**Inscription(s) LG694545628

Comments: This Laboratory Grown Diamond was created by Chemical Vapor Deposition (CVD) growth process.
Type IIa



March 27, 2025	G Report No LG9645628	ROUND BRILLIANT	10.09 - 11.05 X 6.78 MM	Carat Weight	5.08 CARATS	E	VVS 2	IDEAL	61.6%	58%	Medium to Slightly Thick (scored)	Painted	EXCELLENT	EXCELLENT	NONE	(#) LG9645628	Comments: The Laboratory Grown Diamond was created by Chemical Vapor Deposition (CVD) growth process. Type IIA
				Color Grade			Clarity Grade	Cut Grade	Depth	Table	Girdle	Culet	Polish	Symmetry	Fluorescence	Description(s)	