

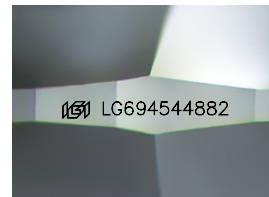
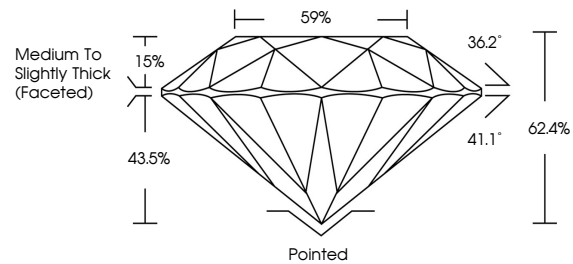


**INTERNATIONAL
GEMOLOGICAL
INSTITUTE**

ELECTRONIC COPY

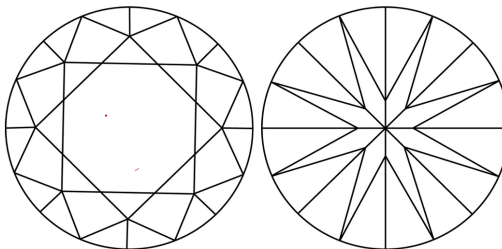
LG694544882
Report verification at igi.org

PROPORTIONS



Sample Image Used

CLARITY CHARACTERISTICS



KEY TO SYMBOLS

Red symbols indicate internal characteristics.
Green symbols indicate external characteristics.

COLOR

D E F G H I J Faint Very Light Light

CLARITY

IF WS¹⁻² VS¹⁻² SI¹⁻² 1-3

Internally Flawless	Very Very Slightly Included	Very Slightly Included	Slightly Included	Included
------------------------	--------------------------------	---------------------------	----------------------	----------



© IGI 2020, International Gemological Institute

FD - 10 20

www.igi.org

THIS DOCUMENT WAS PRODUCED WITH THE FOLLOWING SECURITY MEASURES: SPECIAL DOCUMENT PAPER, INK SCREENS, WATERMARK BACKGROUND DESIGNS, HOLOGRAM AND OTHER SECURITY FEATURES NOT LISTED AND DO EXCEED DOCUMENT SECURITY INDUSTRY GUIDELINES.

LABORATORY GROWN DIAMOND REPORT



March 27, 2025

IGI Report Number **LG694544882**

Description	LABORATORY GROWN DIAMOND
-------------	--------------------------

Shape and Cutting Style **ROUND BRILLIANT**

Measurements	10.82 - 10.91 X 6.78 MM
--------------	-------------------------

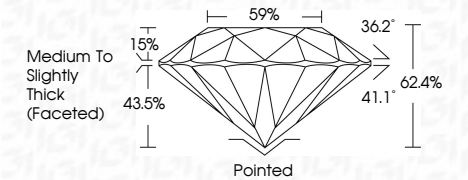
GRADING RESULTS

Carat Weight **5.02 CARATS**

Color Grade **E**

Clarity Grade **VS 1**

Cut Grade **IDEAL**



ADDITIONAL GRADING INFORMATION

Polish **EXCELLENT**Symmetry **EXCELLENT**Fluorescence **NONE**Inscription(s)  LG694544882

Comments: This Laboratory Grown Diamond was created by Chemical Vapor Deposition (CVD) growth process.
Type IIa



IGI

March 27, 2025	10.82 - 10.91 X 6.78 MM	Color Grade	VS 1	Polished	EXCELLENT EXCELLENT NONE IGI LG59454882
IGI Report No LG59454882	10.82 - 10.91 X 6.78 MM	Clarity Grade	IDEXL	EXCELLENT	
ROUND BRILLIANT	10.82 - 10.91 X 6.78 MM	Cut Grade	62.4%	EXCELLENT	
	10.82 - 10.91 X 6.78 MM	Depth	69%	NONE	
	10.82 - 10.91 X 6.78 MM	Table	Medium to Slightly Thick (Faceted)		
	10.82 - 10.91 X 6.78 MM	Girdle			
	10.82 - 10.91 X 6.78 MM	Culet			
	10.82 - 10.91 X 6.78 MM	Polish			
	10.82 - 10.91 X 6.78 MM	Symmetry			
	10.82 - 10.91 X 6.78 MM	Fluorescence			
	10.82 - 10.91 X 6.78 MM	Inscriptions			
Comments: This Laboratory Grown Diamond was created by Chemical Vapor Deposition (CVD) growth process. Type IId					