

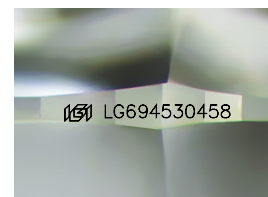
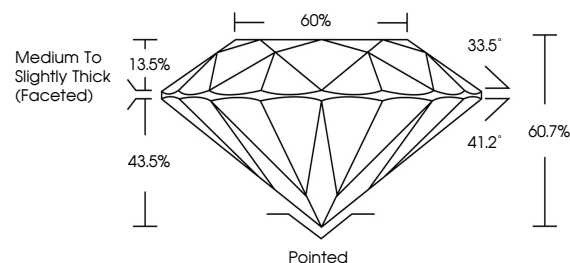


ELECTRONIC COPY

LABORATORY GROWN DIAMOND REPORT

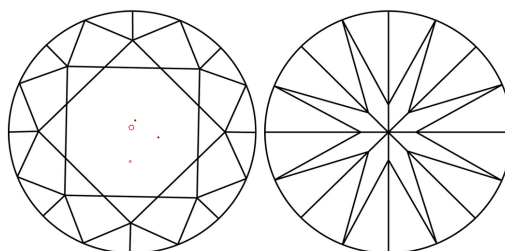
LG694530458
Report verification at iqi.org

PROPORTIONS



Sample Image Used

CLARITY CHARACTERISTICS



KEY TO SYMBOLS

Red symbols indicate internal characteristics.
Green symbols indicate external characteristics.

COLOR

D E F G H I J Faint Very Light Light

CLARITY

IF WS¹⁻² VS¹⁻² SI¹⁻² |¹⁻³

Internally Flawless	Very Very Slightly Included	Very Slightly Included	Slightly Included	Included
------------------------	--------------------------------	---------------------------	----------------------	----------



March 26, 2025

IGI Report Number **LG694530458**Description **LABORATORY GROWN DIAMOND**Shape and Cutting Style **ROUND BRILLIANT**

Measurements 8.19 - 8.24 X 4.99 MM

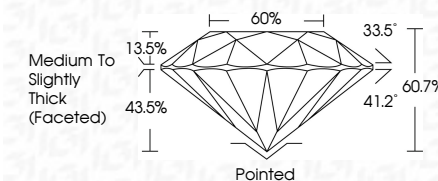
GRADING RESULTS

Carat Weight **2.06 CARATS**

Color Grade

Clarity Grade WS 2

Cut Grade **IDEAL**



ADDITIONAL GRADING INFORMATION

Polish **EXCELLENT**Symmetry **EXCELLENT**Fluorescence **NONE**Inscription(s) LG694530458

Comments: This Laboratory Grown Diamond was created by Chemical Vapor Deposition (CVD) growth process.

Type IIa



© IGI 2020, International Gemological Institute

FD - 10 20

www.igi.org



THIS DOCUMENT WAS PRODUCED WITH THE FOLLOWING SECURITY MEASURES: SPECIAL DOCUMENT PAPER, INK SCREENS, WATERMARK, BACKGROUND DESIGNS, HOLOGRAM AND OTHER SECURITY FEATURES NOT LISTED AND DO EXCEED DOCUMENT SECURITY INDUSTRY GUIDELINE

March 26, 2026	GI Report No. LG94630468	2.06 CARATS
ROUND BRILLANT	D	VVS 2
		IDEAL
		60.7%
		65%
		Medium to Slightly Thick Faceted
		Paired
		EXCELLENT
		BETTER
		NONE
		Igfl LG94630468

Comments:
The Laboratory Grown Diamond was
found to have Local Vapor Deposition
(LVD) growth process.
Type IIa