

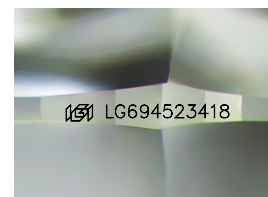
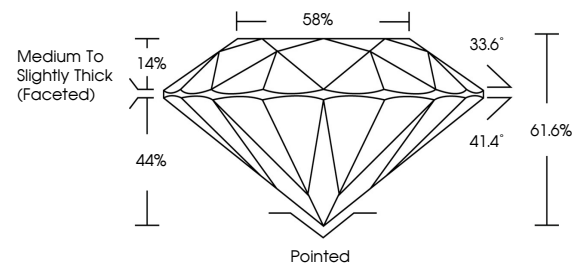


ELECTRONIC COPY

LABORATORY GROWN DIAMOND REPORT

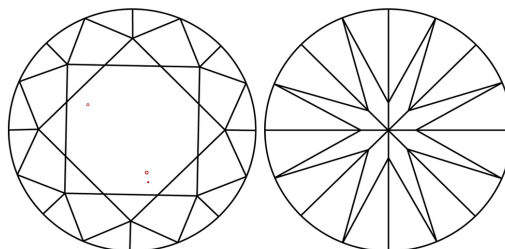
LG694523418
Report verification at igi.org

PROPORTIONS



Sample Image Used

CLARITY CHARACTERISTICS



KEY TO SYMBOLS

Red symbols indicate internal characteristics.
Green symbols indicate external characteristics.

COLOR

D E F G H I J Faint Very Light Light

CLARITY

IF WS¹⁻² VS¹⁻² SI¹⁻² |¹⁻³

| | | | | |
|------------------------|--------------------------------|---------------------------|----------------------|----------|
| Internally Flawless | Very Very Slightly Included | Very Slightly Included | Slightly Included | Included |
|------------------------|--------------------------------|---------------------------|----------------------|----------|

LABORATORY GROWN DIAMOND REPORT



March 28, 2025

IGI Report Number **LG694523418**Description **LABORATORY GROWN DIAMOND**Shape and Cutting Style **ROUND BRILLIANT**

Measurements 9.32 - 9.37 X 5.75 MM

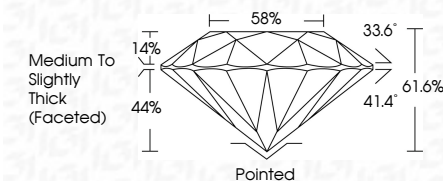
GRADING RESULTS

Carat Weight **3.08 CARATS**

Color Grade E

Clarity Grade VS 1

Cut Grade **IDEAL**



ADDITIONAL GRADING INFORMATION

Polish **EXCELLENT**Symmetry **EXCELLENT**Fluorescence **NONE**Inscription(s)  LG694523418

Comments: This Laboratory Grown Diamond was created by Chemical Vapor Deposition (CVD) growth process.
Type IIa



© IGI 2020, International Gemological Institute

FD - 10 20

www.igi.org



THIS DOCUMENT WAS PRODUCED WITH THE FOLLOWING SECURITY MEASURES: SPECIAL DOCUMENT PAPER, INK SCREENS, WATERMARK, BACKGROUND DESIGNS, HOLOGRAM AND OTHER SECURITY FEATURES NOT LISTED AND DO EXCEED DOCUMENT SECURITY INDUSTRY GUIDELINE

| | | | | | | |
|-----------------|---------------------------|---------------|-----------|--------------------------------------|-----------------|---|
| March 28, 2025 | GI Report No. LG594523418 | 3.08 CARATS | E | VS 1 | Pointed | Comments: This Laboratory Grown Diamond was created by Chemical Vapor Deposition (CVD) growth process. Type IIa |
| ROUND BRILLIANT | | | IDEAL | 61.6% | EXCELLENT | |
| | | | | | EXCELLENT | |
| | | | | Medium to Slightly Thick Facetted | NONE | |
| | | | | | #69 LG594523418 | |
| | 3.32 - 5.37 x 5.75 MM | | | | | |
| | Color Grade | Clarity Grade | Cut Grade | Depth | Girdle | Culet |
| | Corat Weight | | | table | | Symmetry |
| | | | | Grade | | Fluorescence |
| | | | | | | Inclusions(s) |