

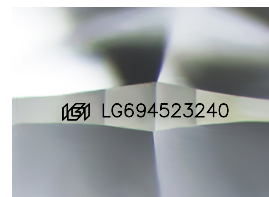
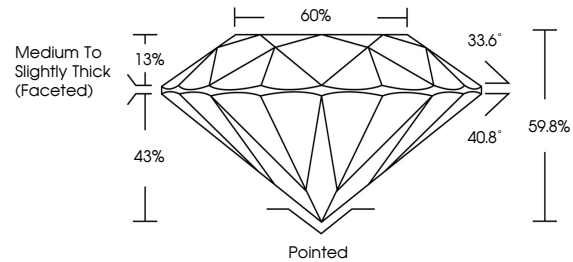


**INTERNATIONAL
GEMOLOGICAL
INSTITUTE**

ELECTRONIC COPY

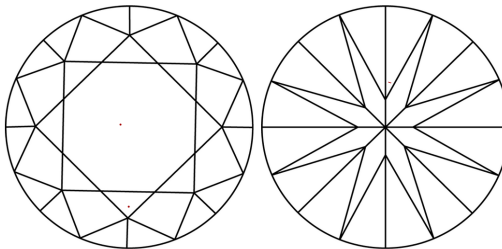
LG694523240
Report verification at igi.org

PROPORTIONS



Sample Image Used

CLARITY CHARACTERISTICS



KEY TO SYMBOLS

Red symbols indicate internal characteristics.
Green symbols indicate external characteristics.

COLOR

D E F G H I J Faint Very Light Light

CLARITY

IF WS¹⁻² VS¹⁻² SI¹⁻² I¹⁻³

Internally Flawless	Very Very Slightly Included	Very Slightly Included	Slightly Included	Included
------------------------	--------------------------------	---------------------------	----------------------	----------



© IGI 2020, International Gemological Institute

FD - 10 20

www.igi.org

LABORATORY GROWN DIAMOND REPORT



March 29, 2025

IGI Report Number **LG694523240**

Description	LABORATORY GROWN DIAMOND
-------------	--------------------------

Shape and Cutting Style **ROUND BRILLIANT**

Measurements 10.26 - 10.31 X 6.16 MM

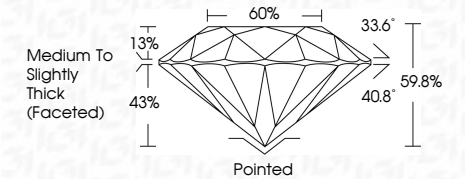
GRADING RESULTS

Carat Weight **4.01 CARATS**

Color Grade **D**

Clarity Grade **VVS 2**

Cut Grade **IDEAL**



ADDITIONAL GRADING INFORMATION

Polish **EXCELLENT**Symmetry **EXCELLENT**Fluorescence **NONE**Inscription(s) **151 LG694523240**

Comments: This Laboratory Grown Diamond was created by Chemical Vapor Deposition (CVD) growth process.
Type IIa



IGI

March 29, 2025	IGI Report No. LG594623240		10.26 - 10.31 X 6.16 MM		4.01 CARATS	D
ROUND BRILLIANT	Carat Weight	Color Grade	Clarity Grade	Cut Grade	VVS 2	IDEAL
	Depth	Table	Girdle	Culet	59.8%	60%
	Symmetry	Fluorescence	Inscriptions(s)	Polish	Medium to Slightly Thick (Faceted)	Polished
	Excellent	None	None	Excellent	Excellent	Excellent
	None	None	None	None	None	None
	Comments:			The Laboratory Grown Diamond was created by Chemical Vapor Deposition (CVD) growth process.		
	Type IId			Type IId		