



**INTERNATIONAL
GEMOLOGICAL
INSTITUTE**

ELECTRONIC COPY

LABORATORY GROWN DIAMOND REPORT

| | |
|-------------------------|--------------------------|
| March 27, 2025 | |
| IGI Report Number | LG694509459 |
| Description | LABORATORY GROWN DIAMOND |
| Shape and Cutting Style | ROUND BRILLIANT |
| Measurements | 11.08 - 11.15 X 6.68 MM |

GRADING RESULTS

| | |
|---------------|-------------|
| Carat Weight | 5.09 CARATS |
| Color Grade | E |
| Clarity Grade | VVS 2 |
| Cut Grade | IDEAL |

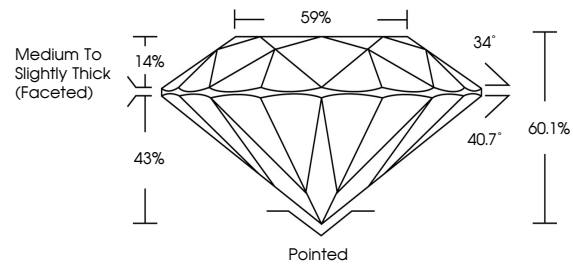
ADDITIONAL GRADING INFORMATION

| | |
|----------------|---|
| Polish | EXCELLENT |
| Symmetry | EXCELLENT |
| Fluorescence | NONE |
| Inscription(s) |  LG694509459 |

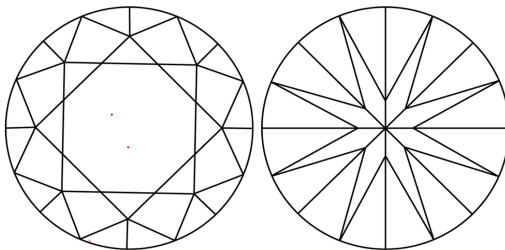
Comments: This Laboratory Grown Diamond was created by Chemical Vapor Deposition (CVD) growth process.
Type IIa

LG694509459
Report verification at [igi.org](https://www.igi.org)

PROPORTIONS

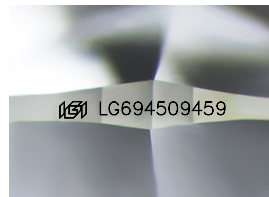


CLARITY CHARACTERISTICS



KEY TO SYMBOLS

Red symbols indicate internal characteristics.
Green symbols indicate external characteristics.



Sample Image Used

COLOR

D E F G H I J Faint Very Light Light

CLARITY

IF WS¹⁻² VS¹⁻² SI¹⁻² I¹⁻³

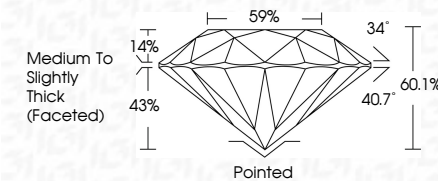
| | | | | |
|------------------------|--------------------------------|---------------------------|----------------------|----------|
| Internally Flawless | Very Very Slightly Included | Very Slightly Included | Slightly Included | Included |
|------------------------|--------------------------------|---------------------------|----------------------|----------|



| | |
|-------------------------|--------------------------|
| March 27, 2025 | |
| IGI Report Number | LG694509459 |
| Description | LABORATORY GROWN DIAMOND |
| Shape and Cutting Style | ROUND BRILLIANT |
| Measurements | 11.08 - 11.15 X 6.68 MM |

GRADING RESULTS

| | |
|---------------|-------------|
| Carat Weight | 5.09 CARATS |
| Color Grade | E |
| Clarity Grade | VVS 2 |
| Cut Grade | IDEAL |



ADDITIONAL GRADING INFORMATION

| | |
|----------------|----------------------------|
| Polish | EXCELLENT |
| Symmetry | EXCELLENT |
| Fluorescence | NONE |
| Inscription(s) | LG6 LG694509459 |

Comments: This Laboratory Grown Diamond was created by Chemical Vapor Deposition (CVD) growth process.
Type IIa



IG



© IGI 2020, International Gemological Institute

FD - 10 20

www.igi.org

THIS DOCUMENT WAS PRODUCED WITH THE FOLLOWING SECURITY MEASURES: SPECIAL DOCUMENT PAPER, INK SCREENS, WATERMARK, BACKGROUND DESIGNS, HOLOGRAM AND OTHER SECURITY FEATURES NOT LISTED AND DO EXCEED DOCUMENT SECURITY INDUSTRY GUIDELINES

March 27, 2025
IGI Report No LG694509459
ROUND BRILLIANT

| | | | | | | | |
|-------------------------|-------------|---------------|-----------|-------|-------|--------|------------------------------------|
| 11.08 - 11.15 X 6.68 MM | Color Grade | Clarity Grade | Cut Grade | Depth | Table | Girdle | 5.09 CARATS |
| | | | | | | | VVS 2 |
| | | | | | | | IDEAL |
| | | | | | | | 60.1% |
| | | | | | | | 59% |
| | | | | | | | Medium to slightly Thick (faceted) |
| | | | | | | | Pointed |
| | | | | | | | EXCELLENT |
| | | | | | | | EXCELLENT |
| | | | | | | | NONE |
| | | | | | | | 4mm Caratstone |

Comments:
This Laboratory Grown Diamond was created by Chemical Vapor Deposition (CVD) growth process.