



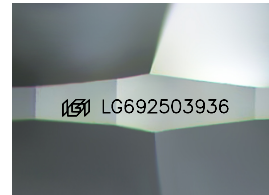
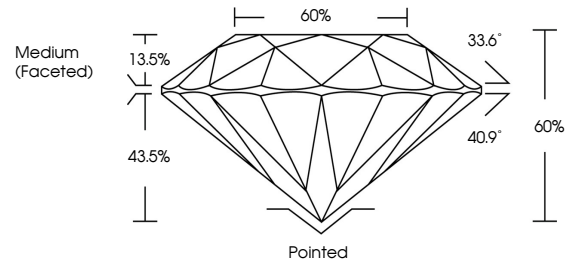
**INTERNATIONAL
GEMOLOGICAL
INSTITUTE**

ELECTRONIC COPY

LABORATORY GROWN DIAMOND REPORT

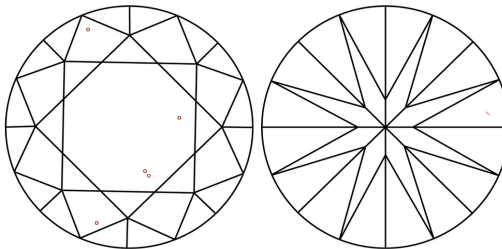
LG692503936
Report verification at igi.org

PROPORTIONS



Sample Image Used

CLARITY CHARACTERISTICS



KEY TO SYMBOLS

Red symbols indicate internal characteristics.
Green symbols indicate external characteristics.

COLOR

D E F G H I J Faint Very Light Light

CLARITY

IF WS¹⁻² VS¹⁻² SI¹⁻² I¹⁻³

Internally Flawless	Very Very Slightly Included	Very Slightly Included	Slightly Included	Included
------------------------	--------------------------------	---------------------------	----------------------	----------



© IGI 2020, International Gemological Institute

FD - 10 20

www.igi.org

LABORATORY GROWN DIAMOND REPORT



March 17, 2025

IGI Report Number **LG692503936**

Description	LABORATORY GROWN DIAMOND
-------------	--------------------------

Shape and Cutting Style **ROUND BRILLIANT**

Measurements 11.15 - 11.20 X 6.71 MM

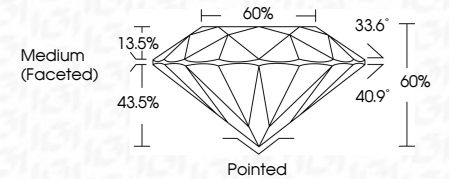
GRADING RESULTS

Carat Weight **5.10 CARATS**

Color Grade	F
-------------	---

Clarity Grade VS 1

Cut Grade **IDEAL**



ADDITIONAL GRADING INFORMATION

Polish **EXCELLENT**Symmetry **EXCELLENT**Fluorescence **NONE**Inscription(s) LG692503936

Comments: This Laboratory Grown Diamond was created by Chemical Vapor Deposition (CVD) growth process.
Type IIa



IGI

March 17, 2025	IGI Report No LG492503956	
ROUND BRILLIANT		
	11.15 - 11.20 X 6.71 MM	5.10 CARATS
Carat Weight	Color Grade	F
Clarity Grade	Cut Grade	VS 1
Depth		IDEAL
Table		60%
Girdle		Medium (Focused)
Culet		Pointed
Polish		EXCELLENT
Symmetry		EXCELLENT
Fluorescence		NONE
Inscription(s)		(69) LG492503956
Comments:		
	This Laboratory Grown Diamond was created by Chemical Vapor Deposition (CVD) growth process.	
Type IId		