



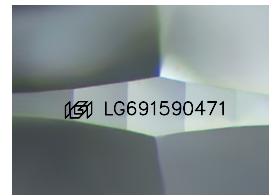
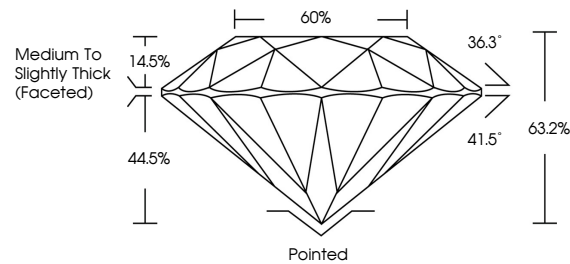
**INTERNATIONAL
GEMOLOGICAL
INSTITUTE**

ELECTRONIC COPY

LABORATORY GROWN DIAMOND REPORT

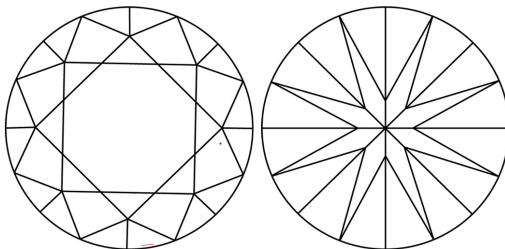
LG691590471
Report verification at igi.org

PROPORTIONS



Sample Image Used

CLARITY CHARACTERISTICS



KEY TO SYMBOLS

Red symbols indicate internal characteristics.
Green symbols indicate external characteristics.

COLOR

D E F G H I J Faint Very Light Light

CLARITY

IF WS¹⁻² VS¹⁻² SI¹⁻² |¹⁻³

Internally Flawless	Very Very Slightly Included	Very Slightly Included	Slightly Included	Included
------------------------	--------------------------------	---------------------------	----------------------	----------



© IGI 2020, International Gemological Institute

FD - 10 20

www.igi.org

LABORATORY GROWN DIAMOND REPORT



March 17, 2025

IGI Report Number **LG691590471**

Description	LABORATORY GROWN DIAMOND
-------------	--------------------------

Shape and Cutting Style **ROUND BRILLIANT**

Measurements	10.72 - 10.83 X 6.83 MM
--------------	-------------------------

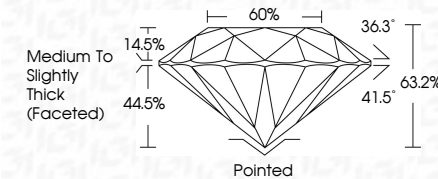
GRADING RESULTS

Carat Weight **5.02 CARATS**

Color Grade	F
-------------	---

Clarity Grade VS 1

Cut Grade **EXCELLENT**



ADDITIONAL GRADING INFORMATION

Polish **EXCELLENT**Symmetry **EXCELLENT**Fluorescence **NONE**Inscription(s)  LG691590471

Comments: This Laboratory Grown Diamond was created by Chemical Vapor Deposition (CVD) growth process.
Type IIa



IG

March 17, 2025	IGI Report No. IGI69190071	
ROUND BRILLIANT	10.72 - 10.83 X 6.83 MM	5.02 CARATS
Color	Color Grade	F
Clarity	Clarity Grade	VS 1
Depth	Depth	EXCELLENT
Table	Table	63.2%
Girdle	Girdle	60%
		Medium to Slightly Thick (Facet)
Culet	Culet	Pointed
Polish	Polish	EXCELLENT
Symmetry	Symmetry	EXCELLENT
Fluorescence	Fluorescence	NONE
Inscriptions(s)	Inscriptions(s)	IGI LG69190071
Comments: This is a Natural, Gem-Grown Diamond was created by Chemical Vapor Deposition (CVD) growth process. Type IIa		