

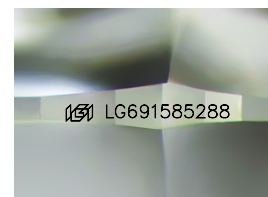
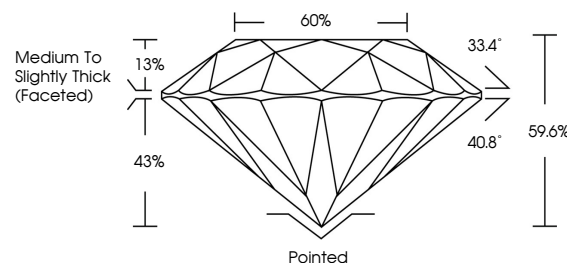


**ELECTRONIC COPY**

## LABORATORY GROWN DIAMOND REPORT

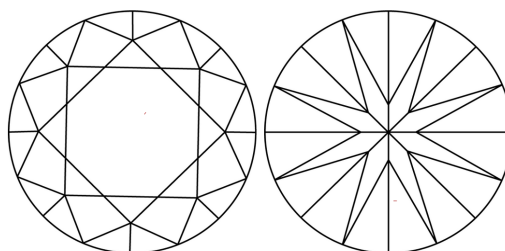
LG691585288  
Report verification at [igi.org](https://igi.org)

## PROPORTIONS



Sample Image Used

## CLARITY CHARACTERISTICS



### KEY TO SYMBOLS

Red symbols indicate internal characteristics.  
Green symbols indicate external characteristics.

## COLOR

D E F G H I J Faint Very Light Light

## CLARITY

IF WS<sup>1-2</sup> VS<sup>1-2</sup> SI<sup>1-2</sup> |<sup>1-3</sup>

Internally Flawless	Very Very Slightly Included	Very Slightly Included	Slightly Included	Included
------------------------	--------------------------------	---------------------------	----------------------	----------



March 16, 2025

IGI Report Number **LG691585288**Description **LABORATORY GROWN DIAMOND**Shape and Cutting Style **ROUND BRILLIANT**

Measurements **9.37 - 9.39 X 5.59 MM**

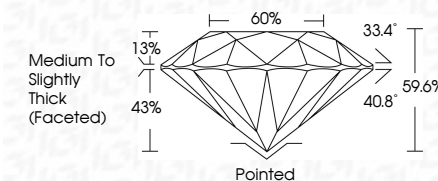
## GRADING RESULTS

Carat Weight **3.02 CARATS**

Color Grade	E
-------------	---

Clarity Grade VS 1

Cut Grade **IDEAL**



### ADDITIONAL GRADING INFORMATION

Polish EXCELLENT

Symmetry **EXCELLENT**Fluorescence **NONE**Inscription(s)  LG691585288

Comments: This Laboratory Grown Diamond was created by Chemical Vapor Deposition (CVD) growth process.  
Type IIa



© IGI 2020, International Gemological Institute

FD - 10 20

**www.igi.org**



THIS DOCUMENT WAS PRODUCED WITH THE FOLLOWING SECURITY MEASURES: SPECIAL DOCUMENT PAPER, INK SCREENS, WATERMARK, BACKGROUND DESIGNS, HOLOGRAM AND OTHER SECURITY FEATURES NOT LISTED AND DO EXCEED DOCUMENT SECURITY INDUSTRY GUIDELINE

March 16, 2025  
GI Report No LG691585288  
ROUND BRILLIANT

3.37 - 9.99 X 5.59 MM	3.02 CARATS
Carat Weight	VS 1
Color Grade	IDEAL
Clarity Grade	99.6%
Cut Grade	60%
Depth	Medium to Slightly Thick (Faceted)
Table	
Girdle	
Culet	Pointed
Polish	EXCELLENT
Symmetry	EXCELLENT
Fluorescence	NONE

**Comments:**  
This Laboratory Grown Diamond was  
created by Chemical Vapor Deposition  
(CVD) growth process.