



ELECTRONIC COPY

LG691555023
Report verification at igi.org



March 15, 2025
IGI Report Number LG691555023
Description LABORATORY GROWN DIAMOND
Shape and Cutting Style CUT CORNERED RECTANGULAR MODIFIED BRILLIANT
Measurements 7.48 X 5.23 X 3.37 MM
GRADING RESULTS
Carat Weight 1.10 CARAT
Color Grade E
Clarity Grade VS 1

LABORATORY GROWN DIAMOND REPORT

March 15, 2025
IGI Report Number LG691555023
Description LABORATORY GROWN DIAMOND
Shape and Cutting Style CUT CORNERED RECTANGULAR MODIFIED BRILLIANT
Measurements 7.48 X 5.23 X 3.37 MM

GRADING RESULTS

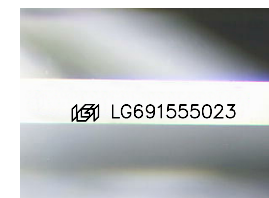
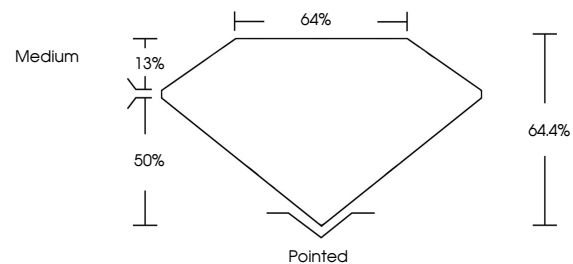
Carat Weight 1.10 CARAT
Color Grade E
Clarity Grade VS 1

ADDITIONAL GRADING INFORMATION

Polish EXCELLENT
Symmetry EXCELLENT
Fluorescence NONE
Inscription(s) LG691555023

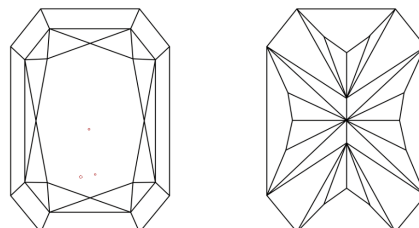
Comments: This Laboratory Grown Diamond was created by Chemical Vapor Deposition (CVD) growth process. Type IIa

PROPORTIONS



Sample Image Used

CLARITY CHARACTERISTICS



KEY TO SYMBOLS

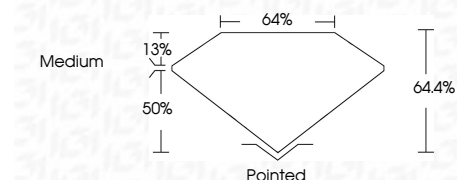
Red symbols indicate internal characteristics.
Green symbols indicate external characteristics.

COLOR

D E F G H I J Faint Very Light Light

CLARITY

IF WS 1-2 VS 1-2 SI 1-2 I 1-3
Internally Flawless Very Very Slightly Included Very Slightly Included Slightly Included Included



ADDITIONAL GRADING INFORMATION

Polish EXCELLENT
Symmetry EXCELLENT
Fluorescence NONE
Inscription(s) LG691555023
Comments: This Laboratory Grown Diamond was created by Chemical Vapor Deposition (CVD) growth process. Type IIa



March 15, 2025
IGI Report No LG691555023
CUT CORNERED RECT. MODIFIED BRILLIANT
1.10 CARAT E
7.48 X 5.23 X 3.37 MM
Color Grade VS 1
Depth 64.4%
Table 50%
Girdle Medium
Culet Pointed
Polish EXCELLENT
Symmetry EXCELLENT
Fluorescence NONE
Inscription(s) LG691555023
Comments: This Laboratory Grown Diamond was created by Chemical Vapor Deposition (CVD) growth process. Type IIa