

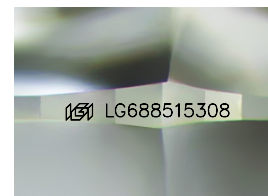
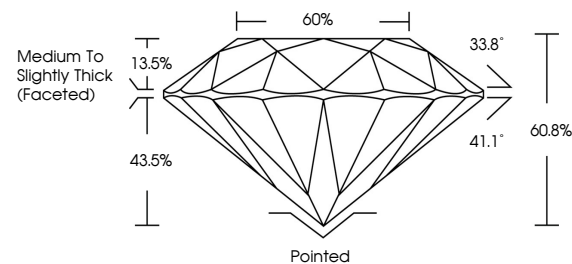


**ELECTRONIC COPY**

## LABORATORY GROWN DIAMOND REPORT

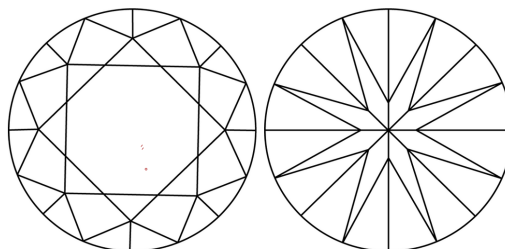
LG688515308  
Report verification at [igi.org](https://igi.org)

## PROPORTIONS



Sample Image Used

## CLARITY CHARACTERISTICS



## KEY TO SYMBOLS

Red symbols indicate internal characteristics.  
Green symbols indicate external characteristics.

## COLOR

D E F G H I J Faint Very Light Light

## CLARITY

IF WS<sup>1-2</sup> VS<sup>1-2</sup> SI<sup>1-2</sup> |<sup>1-3</sup>

|                        |                                |                           |                      |          |
|------------------------|--------------------------------|---------------------------|----------------------|----------|
| Internally<br>Flawless | Very Very<br>Slightly Included | Very<br>Slightly Included | Slightly<br>Included | Included |
|------------------------|--------------------------------|---------------------------|----------------------|----------|

## LABORATORY GROWN DIAMOND REPORT



March 8, 2025

IGI Report Number **LG688515308**

|             |                          |
|-------------|--------------------------|
| Description | LABORATORY GROWN DIAMOND |
|-------------|--------------------------|

Shape and Cutting Style **ROUND BRILLIANT**

Measurements **9.35 - 9.41 X 5.71 MM**

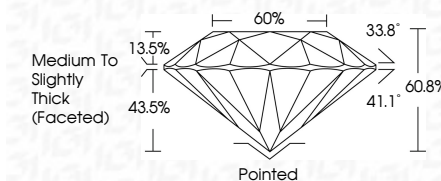
## GRADING RESULTS

Carat Weight **3.10 CARATS**

Color Grade D

Clarity Grade **VVS 2**

Cut Grade **IDEAL**



### ADDITIONAL GRADING INFORMATION

Polish **EXCELLENT**Symmetry **EXCELLENT**Fluorescence **NONE**Inscription(s)  LG688515308

Comments: This Laboratory Grown Diamond was created by Chemical Vapor Deposition (CVD) growth process.

Type IIa



© IGI 2020, International Gemological Institute

FD - 10 20

**www.igi.org**

THIS DOCUMENT WAS PRODUCED WITH THE FOLLOWING SECURITY MEASURES: SPECIAL DOCUMENT PAPER, INK SCREENS, WATERMARK BACKGROUND DESIGNS, HOLOGRAM AND OTHER SECURITY FEATURES NOT LISTED AND DO EXCEED DOCUMENT SECURITY INDUSTRY GUIDELINES

|                 |                           |             |                                    |           |                 |                                                                                                               |        |      |        |          |              |                |
|-----------------|---------------------------|-------------|------------------------------------|-----------|-----------------|---------------------------------------------------------------------------------------------------------------|--------|------|--------|----------|--------------|----------------|
| March 8, 2025   | GI Report No. LG488515308 | 3.10 CARATS | D                                  | WS 2      | Ported          | Comments:<br>Created by Crown Diamond usa<br>Created by Crown Diamond usa<br>(VD) growth process.<br>Type IIa |        |      |        |          |              |                |
| ROUND BRILLIANT |                           |             | WS 2                               | IDEAL     | EXCELLENT       |                                                                                                               |        |      |        |          |              |                |
|                 |                           |             | 60.8%                              | 60%       | NONE            |                                                                                                               |        |      |        |          |              |                |
|                 |                           |             | Medium to Slightly Thick (Faceted) |           | 169 LG488515308 |                                                                                                               |        |      |        |          |              |                |
|                 |                           |             |                                    |           |                 |                                                                                                               |        |      |        |          |              |                |
|                 | Carat Weight              | Color Grade | Clarity Grade                      | Cut Grade | Depth           | Table                                                                                                         | Girdle | Quet | Polish | Symmetry | Fluorescence | Inscription(s) |