



ELECTRONIC COPY

LABORATORY GROWN DIAMOND REPORT

February 21, 2025	
IGI Report Number	LG685556442
Description	LABORATORY GROWN DIAMOND
Shape and Cutting Style	ROUND BRILLIANT
Measurements	10.97 - 11.01 X 6.77 MM

GRADING RESULTS

Carat Weight	5.05 CARATS
Color Grade	E
Clarity Grade	VVS 2
Cut Grade	IDEAL

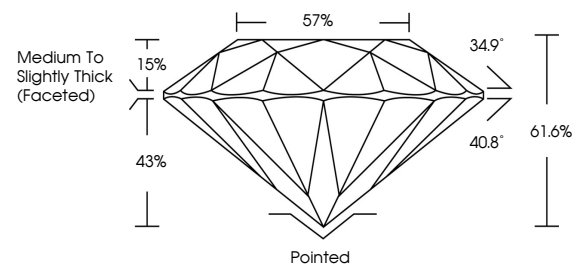
ADDITIONAL GRADING INFORMATION

Polish	EXCELLENT
Symmetry	EXCELLENT
Fluorescence	NONE
Inscription(s)	131 LG685556442

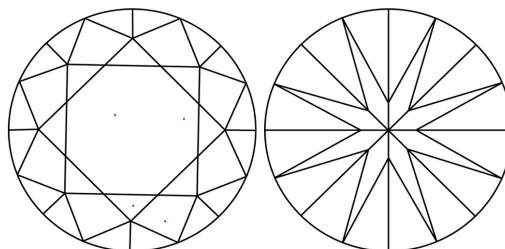
Comments: This Laboratory Grown Diamond was created by Chemical Vapor Deposition (CVD) growth process.
Type IIa

LG685556442
Report verification at igi.org

PROPORTIONS

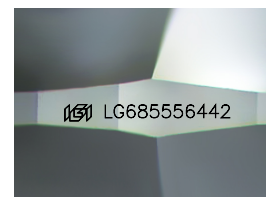


CLARITY CHARACTERISTICS



KEY TO SYMBOLS

Red symbols indicate internal characteristics.
Green symbols indicate external characteristics.



Sample Image Used

COLOR

D E F G H I J Faint Very Light Light

CLARITY

IF WS¹⁻² VS¹⁻² SI¹⁻² |¹⁻³

Internally Flawless	Very Very Slightly Included	Very Slightly Included	Slightly Included	Included
------------------------	--------------------------------	---------------------------	----------------------	----------

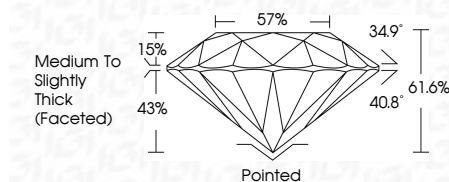
LABORATORY GROWN DIAMOND REPORT



February 21, 2025	
IGI Report Number	LG685556442
Description	LABORATORY GROWN DIAMOND
Shape and Cutting Style	ROUND BRILLIANT
Measurements	10.97 - 11.01 X 6.77 MM

GRADING RESULTS

Carat Weight	5.05 CARATS
Color Grade	E
Clarity Grade	VVS 2
Cut Grade	IDEAL



ADDITIONAL GRADING INFORMATION

Polish	EXCELLENT
Symmetry	EXCELLENT
Fluorescence	NONE
Inscription(s)	 LG685556442
Comments: This Laboratory Grown Diamond was created by Chemical Vapor Deposition (CVD) growth process.	
Type IIa	



© IGI 2020, International Gemological Institute

FD - 10 20

www.igi.org



THIS DOCUMENT WAS PRODUCED WITH THE FOLLOWING SECURITY MEASURES: SPECIAL DOCUMENT PAPER, INK SCREENS, WATERMARK, BACKGROUND DESIGNS, HOLOGRAM AND OTHER SECURITY FEATURES NOT LISTED AND DO EXCEED DOCUMENT SECURITY INDUSTRY GUIDELINE

February 21, 2025
IGI Report No LG6855
ROUND BRILLIANT

ROUND BRILLIANT	10.97 - 11.01 X 6.77 MM		CARAT WEIGHT		COLOR GRADE		CLARITY GRADE		E		5.05 CARATS	
							Cullet		VVS 2		Pointed	
							Cut Grade		IDEAL		EXCELLENT	
							Depth		61.6%		EXCELLENT	
							Table		57%		NONE	
							Girdle		Medium To Slightly Thick (Faceted)			
							Cullet					
							Polish					
							Symmetry					
							Fluorescence					

Comments:
This Laboratory Grown Diamond was created by Chemical Vapor Deposition (CVD) growth process.