



**ELECTRONIC COPY**

## LABORATORY GROWN DIAMOND REPORT

|                         |                          |
|-------------------------|--------------------------|
| February 17, 2025       |                          |
| IGI Report Number       | LG684501162              |
| Description             | LABORATORY GROWN DIAMOND |
| Shape and Cutting Style | ROUND BRILLIANT          |
| Measurements            | 10.99 - 11.06 X 6.74 MM  |

## GRADING RESULTS

|               |             |
|---------------|-------------|
| Carat Weight  | 5.02 CARATS |
| Color Grade   | F           |
| Clarity Grade | VVS 2       |
| Cut Grade     | IDEAL       |

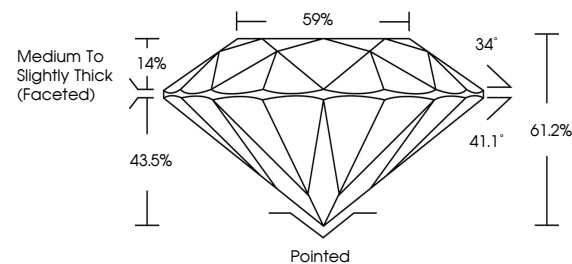
### ADDITIONAL GRADING INFORMATION

|                |   |
|----------------|---|
| Polish         | EXCELLENT   |
| Symmetry       | EXCELLENT   |
| Fluorescence   | NONE  |
| Inscription(s) |  LG684501162 |

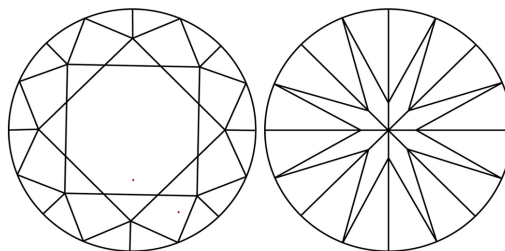
Comments: This Laboratory Grown Diamond was created by Chemical Vapor Deposition (CVD) growth process.  
Type IIa

LG684501162  
Report verification at [igi.org](https://igi.org)

## PROPORTIONS

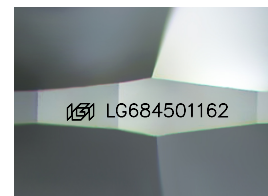


## CLARITY CHARACTERISTICS



## KEY TO SYMBOLS

Red symbols indicate internal characteristics.  
Green symbols indicate external characteristics.



Sample Image Used

**COLOR**

D E F G H I J Faint Very Light Light

## CLARITY

IF                      VS<sup>1-2</sup>                      VS<sup>1-2</sup>                      S<sup>1-2</sup>                      |<sup>1-3</sup>

| Internally<br>Flawless | Very Very<br>Slightly Included | Very<br>Slightly Included | Slightly<br>Included | Included |
|------------------------|--------------------------------|---------------------------|----------------------|----------|
|------------------------|--------------------------------|---------------------------|----------------------|----------|

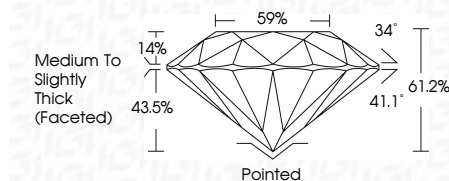
## LABORATORY GROWN DIAMOND REPORT



|                         |                          |
|-------------------------|--------------------------|
| February 17, 2025       |                          |
| IGI Report Number       | LG684501162              |
| Description             | LABORATORY GROWN DIAMOND |
| Shape and Cutting Style | ROUND BRILLIANT          |
| Measurements            | 10.99 - 11.06 X 6.74 MM  |

## GRADING RESULTS

|               |             |
|---------------|-------------|
| Carat Weight  | 5.02 CARATS |
| Color Grade   | F           |
| Clarity Grade | VVS 2       |
| Cut Grade     | IDEAL       |



### ADDITIONAL GRADING INFORMATION

|  |   |
|--|---|
| Polish   | EXCELLENT   |
| Symmetry   | EXCELLENT   |
| Fluorescence   | NONE  |
| Inscription(s)   |  LG684501162 |
| Comments: This Laboratory Grown Diamond was created by Chemical Vapor Deposition (CVD) growth process.<br>Type IIa |   |



© IGI 2020, International Gemological Institute

FD - 10 20



THIS DOCUMENT WAS PRODUCED WITH THE FOLLOWING SECURITY MEASURES: SPECIAL DOCUMENT PAPER, INK SCREENS, WATERMARK, BACKGROUND DESIGNS, HOLOGRAM AND OTHER SECURITY FEATURES NOT LISTED AND DO EXCEED DOCUMENT SECURITY INDUSTRY GUIDELINES

**www.igi.org**

February 17, 2025  
IGI Report No LG684  
ROUND BRILLIANT

|                         |              |               |             |           |                                      |          |           |           |        |                    |              |
|-------------------------|--------------|---------------|-------------|-----------|--------------------------------------|----------|-----------|-----------|--------|--------------------|--------------|
| 10.99 - 11.06 X 6.74 MM | 5.02 CARATS  | VVS 2         | 61.2%       | 59%       | Medium To Slightly Thick (Preferred) | Polished | EXCELLENT | EXCELLENT | NONE   | 4mm (15.65mm) 1.50 |              |
| Round Brilliant         | Carat Weight | Clarity Grade | Color Grade | Cut Grade | Depth                                | Table    | Girdle    | Culet     | Polish | Symmetry           | Fluorescence |

**Comments:**  
This Laboratory Grown Diamond was created by Chemical Vapor Deposition (CVD) growth process.