



**ELECTRONIC COPY**

LG683588089  
Report verification at igi.org



February 15, 2025

IGI Report Number **LG683588089**

Description **LABORATORY GROWN DIAMOND**

Shape and Cutting Style **ROUND BRILLIANT**

Measurements **10.96 - 10.99 X 6.81 MM**

**GRADING RESULTS**

Carat Weight **5.06 CARATS**

Color Grade **F**

Clarity Grade **VVS 2**

Cut Grade **IDEAL**

February 15, 2025

IGI Report Number **LG683588089**

Description **LABORATORY GROWN DIAMOND**

Shape and Cutting Style **ROUND BRILLIANT**

Measurements **10.96 - 10.99 X 6.81 MM**

**GRADING RESULTS**

Carat Weight **5.06 CARATS**

Color Grade **F**

Clarity Grade **VVS 2**

Cut Grade **IDEAL**

**ADDITIONAL GRADING INFORMATION**

Polish **EXCELLENT**

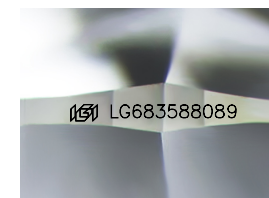
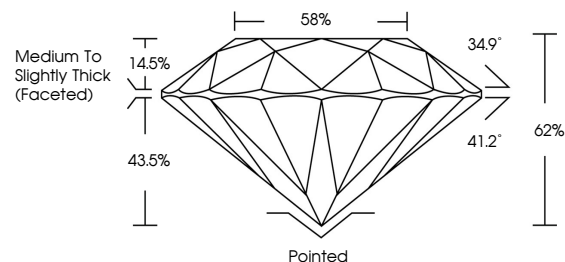
Symmetry **EXCELLENT**

Fluorescence **NONE**

Inscription(s) **LG683588089**

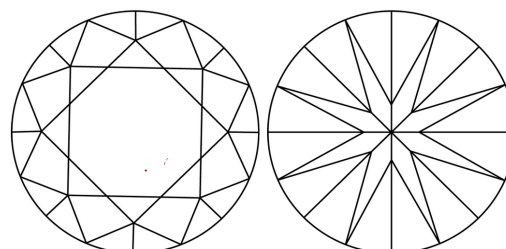
Comments: This Laboratory Grown Diamond was created by Chemical Vapor Deposition (CVD) growth process. Type IIa

**PROPORTIONS**



Sample Image Used

**CLARITY CHARACTERISTICS**



**KEY TO SYMBOLS**

Red symbols indicate internal characteristics.  
Green symbols indicate external characteristics.

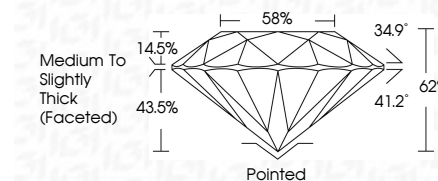
**COLOR**

D E F G H I J Faint Very Light Light

**CLARITY**

IF WS<sup>1-2</sup> VS<sup>1-2</sup> SI<sup>1-2</sup> I<sup>1-3</sup>

Internally Flawless Very Very Slightly Included Very Slightly Included Slightly Included Included



**ADDITIONAL GRADING INFORMATION**

Polish **EXCELLENT**

Symmetry **EXCELLENT**

Fluorescence **NONE**

Inscription(s) **LG683588089**

Comments: This Laboratory Grown Diamond was created by Chemical Vapor Deposition (CVD) growth process. Type IIa



**IGI**



|                                    |                           |                                    |             |                                    |             |                                    |             |                                    |                                    |                                    |             |                                    |             |             |
|------------------------------------|---------------------------|------------------------------------|-------------|------------------------------------|-------------|------------------------------------|-------------|------------------------------------|------------------------------------|------------------------------------|-------------|------------------------------------|-------------|-------------|
| February 15, 2025                  | IGI Report No LG683588089 | ROUND BRILLIANT                    | 5.06 CARATS | F                                  | VVS 2       | IDEAL                              | 62%         | 58%                                | Medium To Slightly Thick (Faceted) | Pointed                            | EXCELLENT   | EXCELLENT                          | NONE        | LG683588089 |
| IGI Report No                      | LG683588089               | ROUND BRILLIANT                    | 5.06 CARATS | F                                  | VVS 2       | IDEAL                              | 62%         | 58%                                | Medium To Slightly Thick (Faceted) | Pointed                            | EXCELLENT   | EXCELLENT                          | NONE        | LG683588089 |
| Carat Weight                       | 5.06 CARATS               | Color Grade                        | F           | Clarity Grade                      | VVS 2       | Cut Grade                          | IDEAL       | Depth                              | 62%                                | Table                              | 58%         | Medium To Slightly Thick (Faceted) | Pointed     | EXCELLENT   |
| Color Grade                        | F                         | Clarity Grade                      | VVS 2       | Cut Grade                          | IDEAL       | Depth                              | 62%         | Table                              | 58%                                | Medium To Slightly Thick (Faceted) | Pointed     | EXCELLENT                          | EXCELLENT   | NONE        |
| Clarity Grade                      | VVS 2                     | Cut Grade                          | IDEAL       | Depth                              | 62%         | Table                              | 58%         | Medium To Slightly Thick (Faceted) | Pointed                            | EXCELLENT                          | EXCELLENT   | NONE                               | LG683588089 |             |
| Cut Grade                          | IDEAL                     | Depth                              | 62%         | Table                              | 58%         | Medium To Slightly Thick (Faceted) | Pointed     | EXCELLENT                          | EXCELLENT                          | NONE                               | LG683588089 |                                    |             |             |
| Depth                              | 62%                       | Table                              | 58%         | Medium To Slightly Thick (Faceted) | Pointed     | EXCELLENT                          | EXCELLENT   | NONE                               | LG683588089                        |                                    |             |                                    |             |             |
| Table                              | 58%                       | Medium To Slightly Thick (Faceted) | Pointed     | EXCELLENT                          | EXCELLENT   | NONE                               | LG683588089 |                                    |                                    |                                    |             |                                    |             |             |
| Medium To Slightly Thick (Faceted) | Pointed                   | EXCELLENT                          | EXCELLENT   | NONE                               | LG683588089 |                                    |             |                                    |                                    |                                    |             |                                    |             |             |
| Pointed                            | EXCELLENT                 | EXCELLENT                          | NONE        | LG683588089                        |             |                                    |             |                                    |                                    |                                    |             |                                    |             |             |
| EXCELLENT                          | EXCELLENT                 | NONE                               | LG683588089 |                                    |             |                                    |             |                                    |                                    |                                    |             |                                    |             |             |
| EXCELLENT                          | NONE                      | LG683588089                        |             |                                    |             |                                    |             |                                    |                                    |                                    |             |                                    |             |             |
| NONE                               | LG683588089               |                                    |             |                                    |             |                                    |             |                                    |                                    |                                    |             |                                    |             |             |
| LG683588089                        |                           |                                    |             |                                    |             |                                    |             |                                    |                                    |                                    |             |                                    |             |             |

Comments: This Laboratory Grown Diamond was created by Chemical Vapor Deposition (CVD) growth process. Type IIa