



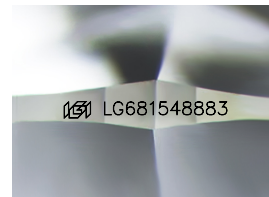
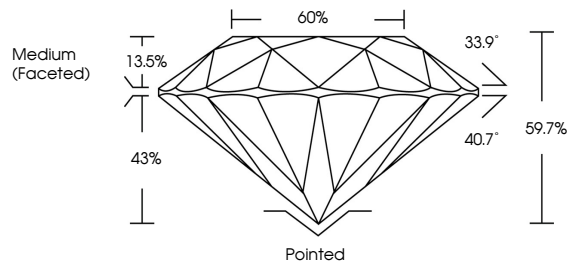
**INTERNATIONAL  
GEMOLOGICAL  
INSTITUTE**

**ELECTRONIC COPY**

## LABORATORY GROWN DIAMOND REPORT

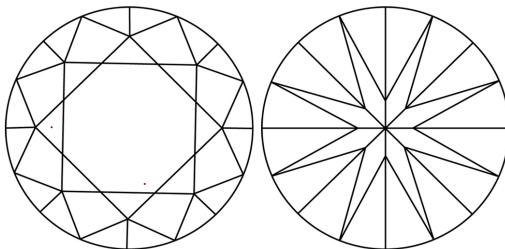
LG681548883  
Report verification at [igi.org](https://igi.org)

## PROPORTIONS



Sample Image Used

## CLARITY CHARACTERISTICS



## KEY TO SYMBOLS

Red symbols indicate internal characteristics.  
Green symbols indicate external characteristics.

**COLOR**

D E F G H I J Faint Very Light Light

## CLARITY

IF      WS<sup>1-2</sup>      VS<sup>1-2</sup>      SI<sup>1-2</sup>      |<sup>1-3</sup>

|                        |                                |                           |                      |          |
|------------------------|--------------------------------|---------------------------|----------------------|----------|
| Internally<br>Flawless | Very Very<br>Slightly Included | Very<br>Slightly Included | Slightly<br>Included | Included |
|------------------------|--------------------------------|---------------------------|----------------------|----------|



February 7, 2025

IGI Report Number **LG681548883**

|             |                          |
|-------------|--------------------------|
| Description | LABORATORY GROWN DIAMOND |
|-------------|--------------------------|

Shape and Cutting Style **ROUND BRILLIANT**

|              |                         |
|--------------|-------------------------|
| Measurements | 11.12 - 11.20 X 6.67 MM |
|--------------|-------------------------|

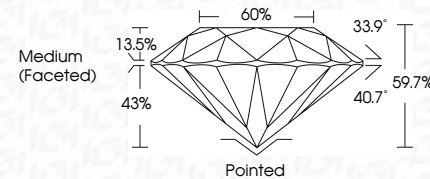
## GRADING RESULTS

Carat Weight **5.09 CARATS**

|             |   |
|-------------|---|
| Color Grade | E |
|-------------|---|

Clarity Grade **VVS 2**

Cut Grade **IDEAL**



### ADDITIONAL GRADING INFORMATION

Polish **EXCELLENCE**Symmetry **EXCELLENCE**

Fluorescence NONI

Inscription(s)  LG68154888

Comments: This Laboratory Grown Diamond was created by Chemical Vapor Deposition (CVD) growth process.  
Type IIa



IG



© IGI 2020, International Gemological Institute

FD - 10 20

**www.igi.org**

THIS DOCUMENT WAS PRODUCED WITH THE FOLLOWING SECURITY MEASURES: SPECIAL DOCUMENT PAPER, INK SCREENS, WATERMARK, BACKGROUND DESIGNS, HOLOGRAM AND OTHER SECURITY FEATURES NOT LISTED AND DO EXCEED DOCUMENT SECURITY INDUSTRY GUIDELINES

February 7, 2025  
IGI Report No LG681548883  
ROUND BRILLIANT

|                         |                  |
|-------------------------|------------------|
| 11.12 - 11.20 X 6.67 MM | 5.09 CARATS      |
| Carat Weight            |                  |
| Color Grade             | E                |
| Clarity Grade           | VVS 2            |
| Cut Grade               | IDEAL            |
| Depth                   | 59.7%            |
| Table                   | 60%              |
| Graile                  | Medium (Faceted) |

|                    |                |
|--------------------|----------------|
| Culet              | Pointed        |
| Polish             | EXCELLENT      |
| Symmetry           | EXCELLENT      |
| Fluorescence       | NONE           |
| Identification (c) | 4091G601549893 |

**Comments:**  
This Laboratory Grown Diamond was created by Chemical Vapor Deposition (CVD) growth process.