



**ELECTRONIC COPY**

LG681547751  
Report verification at igi.org



February 12, 2025

IGI Report Number **LG681547751**

Description **LABORATORY GROWN DIAMOND**

Shape and Cutting Style **CUT CORNERED  
RECTANGULAR MODIFIED  
BRILLIANT**

Measurements **11.70 X 8.57 X 5.76 MM**

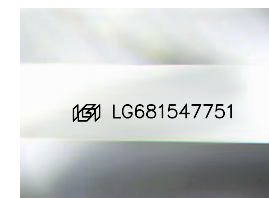
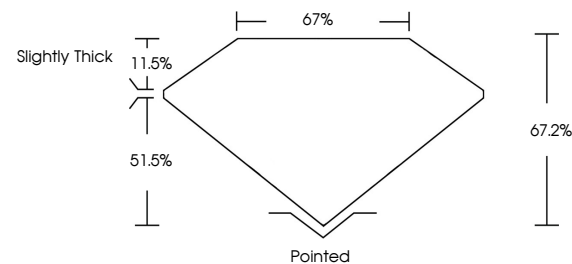
**GRADING RESULTS**

Carat Weight **5.01 CARATS**

Color Grade **F**

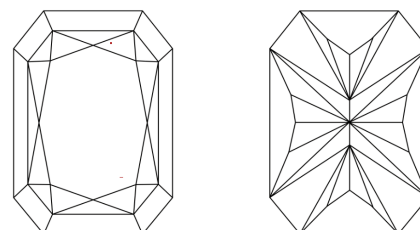
Clarity Grade **VVS 2**

**PROPORTIONS**



Sample Image Used

**CLARITY CHARACTERISTICS**



**KEY TO SYMBOLS**

Red symbols indicate internal characteristics.  
Green symbols indicate external characteristics.

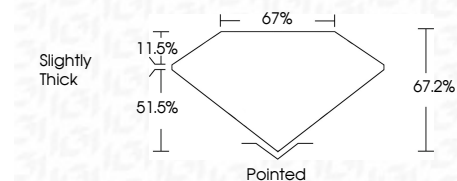
**COLOR**

D E F G H I J Faint Very Light Light

**CLARITY**

IF WS<sup>1-2</sup> VS<sup>1-2</sup> SI<sup>1-2</sup> I<sup>1-3</sup>

Internally Flawless Very Very Slightly Included Very Slightly Included Slightly Included Included



**ADDITIONAL GRADING INFORMATION**

Polish **EXCELLENT**

Symmetry **EXCELLENT**

Fluorescence **NONE**

Inscription(s) **IGI LG681547751**

Comments: This Laboratory Grown Diamond was created by Chemical Vapor Deposition (CVD) growth process. Type IIa

February 12, 2025

IGI Report Number **LG681547751**

Description **LABORATORY GROWN DIAMOND**

Shape and Cutting Style **CUT CORNERED RECTANGULAR  
MODIFIED BRILLIANT**

Measurements **11.70 X 8.57 X 5.76 MM**

**GRADING RESULTS**

Carat Weight **5.01 CARATS**

Color Grade **F**

Clarity Grade **VVS 2**

**ADDITIONAL GRADING INFORMATION**

Polish **EXCELLENT**

Symmetry **EXCELLENT**

Fluorescence **NONE**

Inscription(s) **IGI LG681547751**

Comments: This Laboratory Grown Diamond was created by Chemical Vapor Deposition (CVD) growth process. Type IIa



**IGI**



|                        |                           |                                       |               |       |       |        |       |                |          |              |                |      |                 |
|------------------------|---------------------------|---------------------------------------|---------------|-------|-------|--------|-------|----------------|----------|--------------|----------------|------|-----------------|
| February 12, 2025      | IGI Report No LG681547751 | CUT CORNERED RECT. MODIFIED BRILLIANT | 5.01 CARATS   | F     | VVS 2 | 67.2%  | 67%   | Slightly Thick | Pointed  | EXCELLENT    | EXCELLENT      | NONE | IGI LG681547751 |
| 11.70 X 8.57 X 5.76 MM | Carat Weight              | Color Grade                           | Clarity Grade | Table | Depth | Girdle | Culet | Polish         | Symmetry | Fluorescence | Inscription(s) |      |                 |

Comments: This Laboratory Grown Diamond was created by Chemical Vapor Deposition (CVD) growth process. Type IIa