



ELECTRONIC COPY

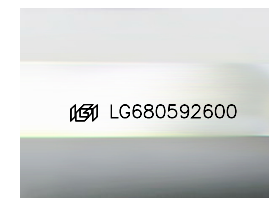
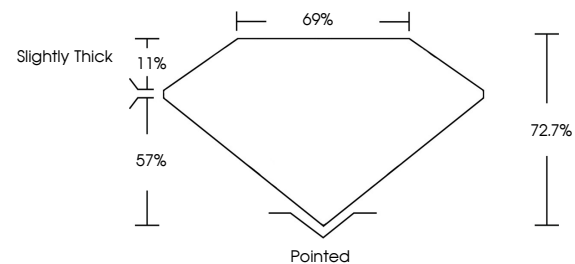
LG680592600
Report verification at igi.org



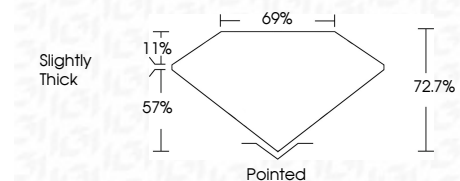
February 5, 2025
IGI Report Number **LG680592600**
Description **LABORATORY GROWN DIAMOND**
Shape and Cutting Style **PRINCESS CUT**
Measurements **6.66 X 6.53 X 4.75 MM**
GRADING RESULTS
Carat Weight **1.80 CARAT**
Color Grade **D**
Clarity Grade **VVS 2**

February 5, 2025
IGI Report Number **LG680592600**
Description **LABORATORY GROWN DIAMOND**
Shape and Cutting Style **PRINCESS CUT**
Measurements **6.66 X 6.53 X 4.75 MM**

PROPORTIONS



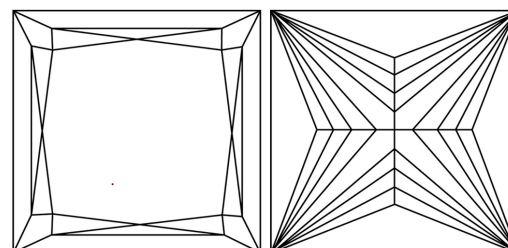
Sample Image Used



GRADING RESULTS

Carat Weight **1.80 CARAT**
Color Grade **D**
Clarity Grade **VVS 2**

CLARITY CHARACTERISTICS



COLOR

D E F G H I J Faint Very Light Light

CLARITY

IF	VS ¹⁻²	VS ¹⁻²	SI ¹⁻²	I ¹⁻³
Internally Flawless	Very Very Slightly Included	Very Slightly Included	Slightly Included	Included

KEY TO SYMBOLS

Red symbols indicate internal characteristics.
Green symbols indicate external characteristics.

ADDITIONAL GRADING INFORMATION

Polish **EXCELLENT**
Symmetry **EXCELLENT**
Fluorescence **NONE**
Inscription(s) **IGI LG680592600**
Comments: This Laboratory Grown Diamond was created by Chemical Vapor Deposition (CVD) growth process.
Type IIa

ADDITIONAL GRADING INFORMATION

Polish **EXCELLENT**
Symmetry **EXCELLENT**
Fluorescence **NONE**
Inscription(s) **IGI LG680592600**

Comments: This Laboratory Grown Diamond was created by Chemical Vapor Deposition (CVD) growth process.
Type IIa



February 5, 2025
IGI Report No. **LG680592600**
PRINCESS CUT
6.66 X 6.53 X 4.75 MM
Carat Weight **1.80 CARAT**
Color Grade **D**
Clarity Grade **VVS 2**
Depth **72.7%**
Table **69%**
Girdle **Slightly Thick**
Culet **Pointed**
Polish **EXCELLENT**
Symmetry **EXCELLENT**
Fluorescence **NONE**
Inscription(s) **IGI LG680592600**
Comments: This Laboratory Grown Diamond was created by Chemical Vapor Deposition (CVD) growth process.
Type IIa