



ELECTRONIC COPY

LG680573187
Report verification at igi.org



February 4, 2025

IGI Report Number **LG680573187**

Description **LABORATORY GROWN DIAMOND**

Shape and Cutting Style **CUT CORNERED
RECTANGULAR MODIFIED
BRILLIANT**

Measurements **7.44 X 5.11 X 3.41 MM**

GRADING RESULTS

Carat Weight **1.09 CARAT**

Color Grade **F**

Clarity Grade **VS 1**

LABORATORY GROWN DIAMOND REPORT

February 4, 2025

IGI Report Number **LG680573187**

Description **LABORATORY GROWN DIAMOND**

Shape and Cutting Style **CUT CORNERED RECTANGULAR
MODIFIED BRILLIANT**

Measurements **7.44 X 5.11 X 3.41 MM**

GRADING RESULTS

Carat Weight **1.09 CARAT**

Color Grade **F**

Clarity Grade **VS 1**

ADDITIONAL GRADING INFORMATION

Polish **EXCELLENT**

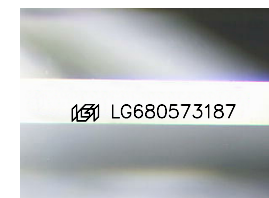
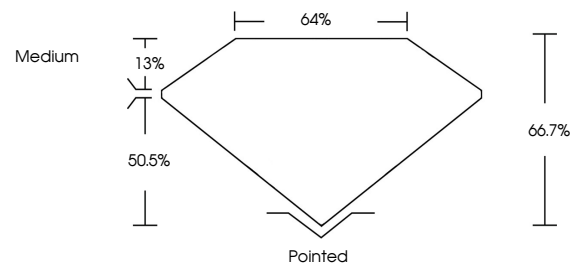
Symmetry **EXCELLENT**

Fluorescence **NONE**

Inscription(s) **IGI LG680573187**

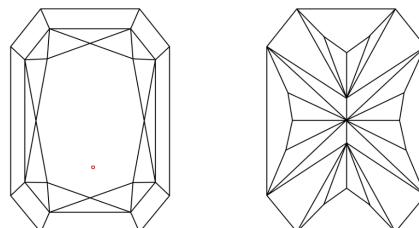
Comments: This Laboratory Grown Diamond was created by Chemical Vapor Deposition (CVD) growth process.
Type IIa

PROPORTIONS



Sample Image Used

CLARITY CHARACTERISTICS



KEY TO SYMBOLS

Red symbols indicate internal characteristics.
Green symbols indicate external characteristics.

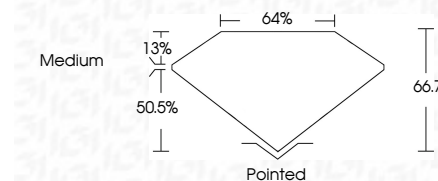
COLOR

D E F G H I J Faint Very Light Light

CLARITY

IF WS¹⁻² VS¹⁻² SI¹⁻² I¹⁻³

Internally Flawless Very Very Slightly Included Very Slightly Included Slightly Included Included



ADDITIONAL GRADING INFORMATION

Polish **EXCELLENT**

Symmetry **EXCELLENT**

Fluorescence **NONE**

Inscription(s) **IGI LG680573187**

Comments: This Laboratory Grown Diamond was created by Chemical Vapor Deposition (CVD) growth process.
Type IIa



IGI



February 4, 2025	IGI Report No. LG680573187	CUT CORNERED RECT. MODIFIED BRILLIANT	1.09 CARAT	F	VS 1	66.7%	64%	Medium	Pointed	EXCELLENT	EXCELLENT	NONE	IGI LG680573187
7.44 X 5.11 X 3.41 MM		Color Grade	Carat Weight	Clarity Grade	Table	Depth	Girdle	Culet	Polish	Symmetry	Fluorescence	Inscription(s)	IGI LG680573187

Comments: This Laboratory Grown Diamond was created by Chemical Vapor Deposition (CVD) growth process.
Type IIa