



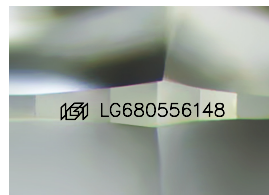
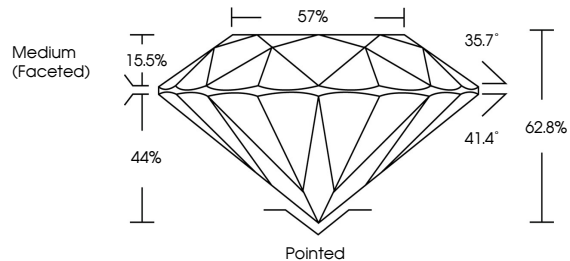
**INTERNATIONAL  
GEMOLOGICAL  
INSTITUTE**

**ELECTRONIC COPY**

## LABORATORY GROWN DIAMOND REPORT

LG680556148  
Report verification at [igi.org](https://igi.org)

## PROPORTIONS



Sample Image Used

**COLOR**

D E F G H I J Faint Very Light Light

## CLARITY

IF      WS<sup>1-2</sup>      VS<sup>1-2</sup>      SI<sup>1-2</sup>      I<sup>1-3</sup>

Internally Flawless	Very Very Slightly Included	Very Slightly Included	Slightly Included	Included
------------------------	--------------------------------	---------------------------	----------------------	----------



© IGI 2020, International Gemological Institute

FD - 10 20

**www.igi.org**

## LABORATORY GROWN DIAMOND REPORT



March 12, 2025

IGI Report Number **LG680556148**

Description	LABORATORY GROWN DIAMOND
-------------	--------------------------

Shape and Cutting Style **ROUND BRILLIANT**

Measurements	8.66 - 8.69 X 5.45 MM
--------------	-----------------------

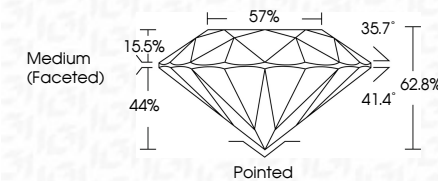
## GRADING RESULTS

Carat Weight **2.50 CARATS**

Color Grade	E
-------------	---

Clarity Grade **VVS 2**

Cut Grade **EXCELLENT**



### ADDITIONAL GRADING INFORMATION

Polish **EXCELLENT**Symmetry **EXCELLENT**Fluorescence **NONE**Inscription(s)  LG680556148

Comments: This Laboratory Grown Diamond was created by Chemical Vapor Deposition (CVD) growth process.  
Type IIa



IG

March 12, 2025	IGI Report No LG6056148	2.50 CARATS	VS 2	Polished	Comments: This Laboratory Grown Diamond Was created by Chemical Vapor Deposition (CVD) growth process. Type IIa
ROUND BRILLIANT	8.66 - 8.69 X 6.45 MM	EXCELLENT	62.8%	EXCELLENT	
Carat Weight			67%	EXCELLENT	
Color Grade				NONE	
			Medium (Faced)	IGI LG6056148	
Clarity Grade					
Cut Grade					
Depth					
Table					
Grade					
Color					
Polish					
Symmetry					
Fluorescence					
Inscription(s)					