



**INTERNATIONAL  
GEMOLOGICAL  
INSTITUTE**

**ELECTRONIC COPY**

LG680556014  
Report verification at [igi.org](https://igi.org)

LABORATORY GROWN DIAMOND REPORT



March 12, 2025

IGI Report Number **LG680556014**

Description	LABORATORY GROWN DIAMOND
-------------	--------------------------

Shape and Cutting Style **ROUND BRILLIANT**

Measurements **8.74 - 8.78 X 5.36 MM**

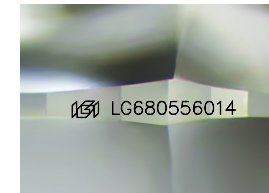
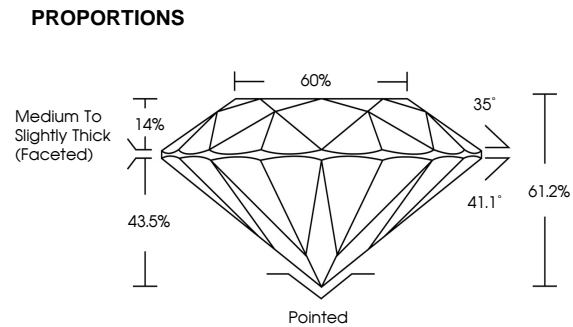
## GRADING RESULTS

Carat Weight **2.54 CARATS**

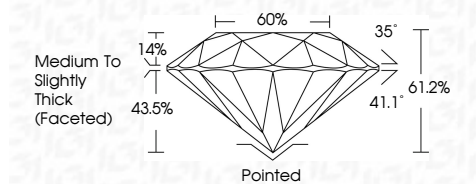
Color Grade	F
-------------	---

Clarity Grade **VS 2**

Cut Grade **IDEAL**



Sample Image Used



## COLOR

D E F G H I J Faint Very Light Light

## CLARITY

IF      VWS<sup>1-2</sup>      VS<sup>1-2</sup>      SI<sup>1-2</sup>      I<sup>1</sup>

Internally Flawless	Very Very Slightly Included	Very Slightly Included	Slightly Included	Included
------------------------	--------------------------------	---------------------------	----------------------	----------



© IGI 2020, International Gemological Institute

FD - 10 20

**www.igi.org**



THIS DOCUMENT WAS PRODUCED WITH THE FOLLOWING SECURITY MEASURES: SPECIAL DOCUMENT PAPER, INK SCREENS, WATERMARK, BACKGROUND DESIGNS, HOLOGRAM AND OTHER SECURITY FEATURES NOT LISTED AND DO EXCEED DOCUMENT SECURITY INDUSTRY GUIDELINES



March 12, 2008	Carat Weight	2.54 CARATS
GI Report No LG80656014	Color Grade	F
ROUND BRILLIANT	Clarity Grade	VVS 2
5.74 - 5.70 X 5.35 MM	Cut Grade	IDEAL
	Depth	61.2%
	Table	65%
	Grade	Medium to Slightly Thick Faceted
	Culet	Pointed
	Polish	EXCELLENT
	Symmetry	EXCELLENT
	Fluorescence	NONE
	Inscription(s)	6891 LG80656014

Comments:  
 This Laboratory Grown Diamond was  
 created by Chemical Vapor Deposition  
 (CVD) growth process.  
 Type IIa