



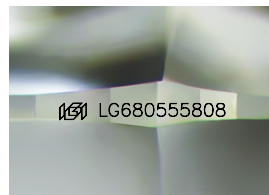
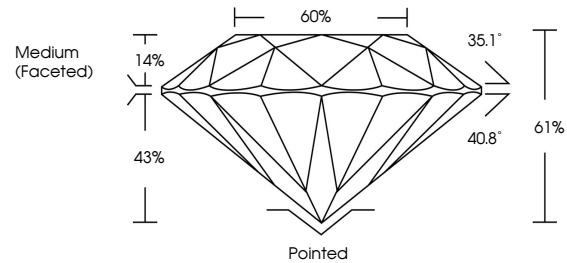
**INTERNATIONAL
GEMOLOGICAL
INSTITUTE**

ELECTRONIC COPY

LABORATORY GROWN DIAMOND REPORT

LG680555808
Report verification at igi.org

PROPORTIONS



Sample Image Used

COLOR

D E F G H I J Faint Very Light Light

CLARITY

IF	WVS ¹⁻²	VS ¹⁻²	SI ¹⁻²	I ¹⁻³
Internally Flawless	Very Very Slightly Included	Very Slightly Included	Slightly Included	Included



© IGI 2020, International Gemological Institute

FD - 10 20

www.igi.org

LABORATORY GROWN DIAMOND REPORT



March 11, 2025

IGI Report Number **LG680555808**

Description	LABORATORY GROWN DIAMOND
-------------	--------------------------

Shape and Cutting Style **ROUND BRILLIANT**

Measurements	8.73 - 8.76 X 5.34 MM
--------------	-----------------------

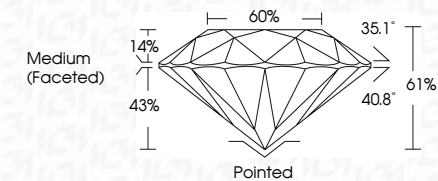
GRADING RESULTS

Carat Weight **2.54 CARATS**

Color Grade	F
-------------	---

Clarity Grade **VVS 2**

Cut Grade **IDEAL**



ADDITIONAL GRADING INFORMATION

Polish **EXCELLENT**Symmetry **EXCELLENT**Fluorescence **NONE**Inscription(s) LG68055580

Comments: This Laboratory Grown Diamond was created by Chemical Vapor Deposition (CVD) growth process.
Type IIa



IGI

March 11, 2025	G Report No LG60555908	
GI REPORT	BRILLIANT	
373 - 375 X 5.31 MM		
Carat Weight	2.54 CARATS	
Color Grade	F	
Clarity Grade	VVS 2	
Cut Grade	IDEAL	
Depth	61%	
Table	60%	
Grille	Medium (Faceted)	
Culet	Pointed	
Polish	EXCELLENT	
Symmetry	EXCELLENT	
Fluorescence	NONE	
Inscription(s)	681 LG60555908	
Comments:	This Laboratory Created Diamond was created by Chemical Vapor Deposition (CVD) growth process.	
	Type IIa	