



ELECTRONIC COPY

LABORATORY GROWN DIAMOND REPORT

LG680555636
Report verification at igi.org

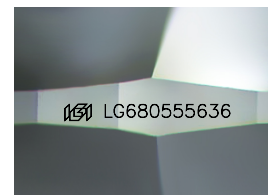
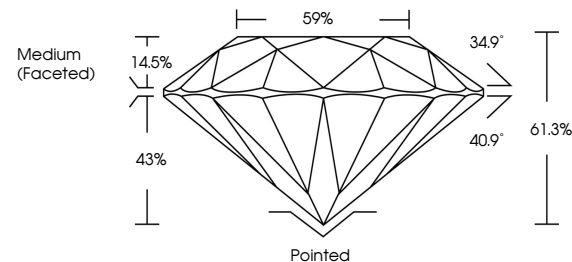
March 11, 2025	
IGI Report Number	LG680555636
Description	LABORATORY GROWN DIAMOND
Shape and Cutting Style	ROUND BRILLIANT
Measurements	8.73 - 8.78 X 5.37 MM
GRADING RESULTS	
Carat Weight	2.54 CARATS
Color Grade	F
Clarity Grade	VVS 2
Cut Grade	IDEAL

ADDITIONAL GRADING INFORMATION

Polish	EXCELLENT
Symmetry	EXCELLENT
Fluorescence	NONE
Inscription(s)	15 LG680555636

Comments: This Laboratory Grown Diamond was created by Chemical Vapor Deposition (CVD) growth process.
Type IIa

PROPORTIONS



Sample Image Used

COLOR

D E F G H I J Faint Very Light Light

CLARITY

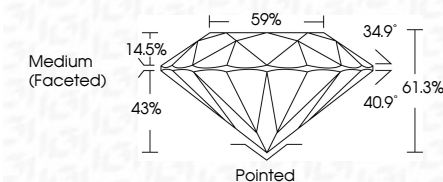
IF VS¹⁻² VS¹⁻² S¹⁻² |¹⁻³

Internally Flawless	Very Very Slightly Included	Very Slightly Included	Slightly Included	Included
------------------------	--------------------------------	---------------------------	----------------------	----------

LABORATORY GROWN DIAMOND REPORT



March 11, 2025	
IGI Report Number	LG680555636
Description	LABORATORY GROWN DIAMOND
Shape and Cutting Style	ROUND BRILLIANT
Measurements	8.73 - 8.78 X 5.37 MM
GRADING RESULTS	
Carat Weight	2.54 CARATS
Color Grade	F
Clarity Grade	VVS 2
Cut Grade	IDEAL



ADDITIONAL GRADING INFORMATION

Polish	EXCELLENT
Symmetry	EXCELLENT
Fluorescence	NONE
Inscription(s)	 LG680555636
<p>Comments: This Laboratory Grown Diamond was created by Chemical Vapor Deposition (CVD) growth process.</p> <p>Type IIa</p>	



© IGI 2020, International Gemological Institute

FD - 10 20



THIS DOCUMENT WAS PRODUCED WITH THE FOLLOWING SECURITY MEASURES: SPECIAL DOCUMENT PAPER, INK SCREENS, WATERMARK, BACKGROUND DESIGNS, HOLOGRAM, AND OTHER SECURITY FEATURES NOT LISTED AND DO EXCEED DOCUMENT SECURITY INDUSTRY GUIDELINES

www.igi.org

March 11, 2025	Carat Weight	2.54 CARATS	Pointed
GI Report No. LG490555636	Color Grade	F	EXCELLENT
ROUND BRILLIANT	Clarity Grade	VVS 2	EXCELLENT
7.75 x 7.75 x 5.37 MM	Cut Grade	IDEAL	NONE
	Depth	61.3%	#69 LG490555636
	Table	59%	
	Girdle	Medium (Faceted)	
	Culet		
	Polish		
	Symmetry		
	Fluorescence		
	Inscription(s)		
	Comments:		
	This Laboratory Grown Diamond was created by Chemical Vapor Deposition (CVD) growth process.		
	Type IIA		