



**ELECTRONIC COPY**

## LABORATORY GROWN DIAMOND REPORT

LG68055578  
Report verification at [igi.org](https://igi.org)

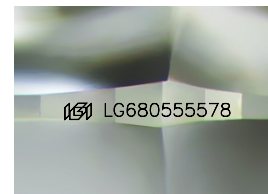
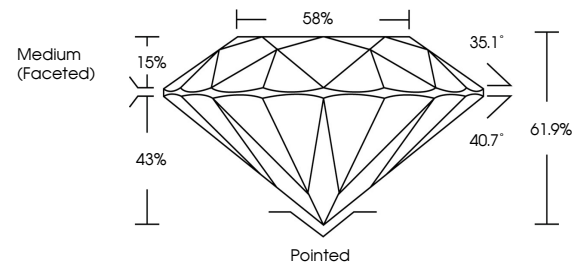
March 11, 2025	
IGI Report Number	LG680555578
Description	LABORATORY GROWN DIAMOND
Shape and Cutting Style	ROUND BRILLIANT
Measurements	8.71 - 8.74 X 5.41 MM
GRADING RESULTS	
Carat Weight	2.57 CARATS
Color Grade	E
Clarity Grade	VVS 2
Cut Grade	IDEAL

### ADDITIONAL GRADING INFORMATION

Polish	EXCELLENT
Symmetry	EXCELLENT
Fluorescence	NONE
Inscription(s)	 LG680555578

Comments: This Laboratory Grown Diamond was created by Chemical Vapor Deposition (CVD) growth process.  
Type IIa

## PROPORTIONS



Sample Image Used

## COLOR

D E F G H I J Faint Very Light Light

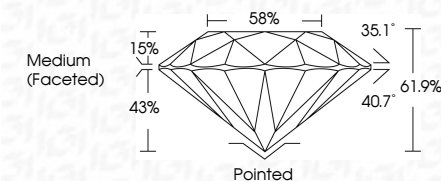
## CLARITY

IF	VS <sup>1-2</sup>	VS <sup>1-2</sup>	SI <sup>1-2</sup>	I <sup>1-3</sup>
Internally Flawless	Very Very Slightly Included	Very Slightly Included	Slightly Included	Included

## LABORATORY GROWN DIAMOND REPORT



March 11, 2025	
IGI Report Number	LG680555578
Description	LABORATORY GROWN DIAMOND
Shape and Cutting Style	ROUND BRILLIANT
Measurements	8.71 - 8.74 X 5.41 MM
GRADING RESULTS	
Carat Weight	2.57 CARATS
Color Grade	E
Clarity Grade	VVS 2
Cut Grade	IDEAL



### ADDITIONAL GRADING INFORMATION

Polish	EXCELLENT
Symmetry	EXCELLENT
Fluorescence	NONE
Inscription(s)	 LG680555578
Comments: This Laboratory Grown Diamond was created by Chemical Vapor Deposition (CVD) growth process.	
Type IIa	



IG



© IGI 2020, International Gemological Institute

FD - 10 20



THIS DOCUMENT WAS PRODUCED WITH THE FOLLOWING SECURITY MEASURES: SPECIAL DOCUMENT PAPER, INK SCREENS, WATERMARK, BACKGROUND DESIGNS, HOLOGRAM AND OTHER SECURITY FEATURES NOT LISTED AND DO EXCEED DOCUMENT SECURITY INDUSTRY GUIDELINES

**www.igi.org**

March 11, 2025	Carat Weight	Pointed
GI Report No. LG49055578	Color Grade	EXCELLENT
ROUND BRILLIANT	Clarity Grade	EXCELLENT
1.71 - 1.74 X 8.41 MM	Depth	NONE
	Table	100%
	Girdle	Medium (Faceted)
	Culet	Polished
	Polish	EXCELLENT
	Symmetry	EXCELLENT
	Fluorescence	NONE
	Inscription(s)	100% LG49055578
	Comments:	
		This Laboratory Grown Diamond was created by Chemical Vapor Deposition (CVD) growth process.
		Type IIA