

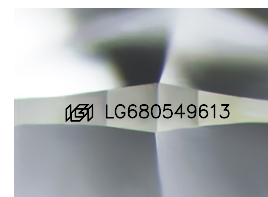
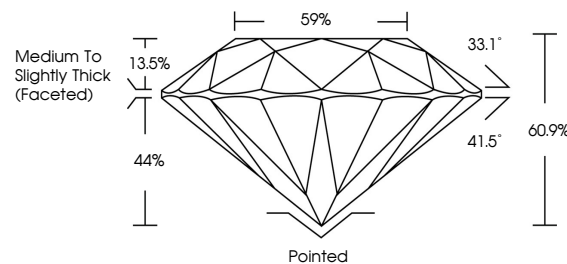


ELECTRONIC COPY

LABORATORY GROWN DIAMOND REPORT

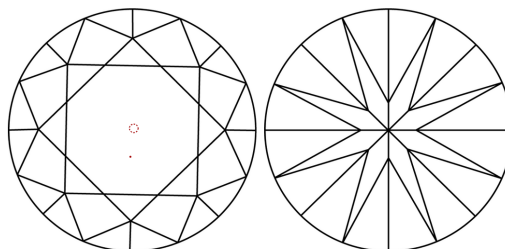
LG680549613
Report verification at igi.org

PROPORTIONS



Sample Image Used

CLARITY CHARACTERISTICS



KEY TO SYMBOLS

Red symbols indicate internal characteristics.
Green symbols indicate external characteristics.

COLOR

D E F G H I J Faint Very Light Light

CLARITY

IF WS¹⁻² VS¹⁻² SI¹⁻² |¹⁻³

Internally Flawless	Very Very Slightly Included	Very Slightly Included	Slightly Included	Included
------------------------	--------------------------------	---------------------------	----------------------	----------

LABORATORY GROWN DIAMOND REPORT



January 31, 2025

IGI Report Number **LG680549613**

Description **LABORATORY GROWN DIAMOND**Shape and Cutting Style **ROUND BRILLIANT**

Measurements 11.06 - 11.10 X 6.76 MM

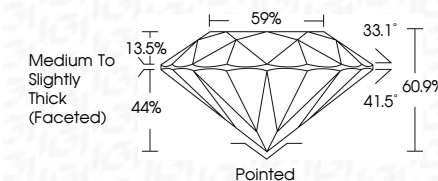
GRADING RESULTS

Carat Weight **5.05 CARATS**

Color Grade E

Clarity Grade VS 1

Cut Grade **IDEAL**



ADDITIONAL GRADING INFORMATION

Polish **EXCELLENT**Symmetry **EXCELLENT**

Fluorescence NONI

Inscription(s) LG680549613

Comments: This Laboratory Grown Diamond was created by Chemical Vapor Deposition (CVD) growth process.
Type IIa



© IGI 2020, International Gemological Institute

FD - 10 20



THIS DOCUMENT WAS PRODUCED WITH THE FOLLOWING SECURITY MEASURES: SPECIAL DOCUMENT PAPER, INK SCREENS, WATERMARK, BACKGROUND DESIGNS, HOLOGRAM AND OTHER SECURITY FEATURES NOT LISTED AND DO EXCEED DOCUMENT SECURITY INDUSTRY GUIDELINES

www.igi.org

January 31, 2025		
GJ Report No: LG680569013		
ROUND BRILLIANT		
11.06 - 11.10 x 6.76 MM		
Carat Weight	Color Grade	Clarity Grade
E	Vs1	IDEAL
5.05 CARATS	VS 1	IDEAL
		60%
		59%
		Medium to Slightly Thick Faceted)
	Poited	
	EXCELLENT	
	EXCELLENT	
	NONE	
	1691 LG680569013	
Comments:		
This Crown Diamond was created by Chemical Vapor Deposition (CVD) growth process.		
Type IIa		