



ELECTRONIC COPY

LG678539228
Report verification at igi.org



January 23, 2025

IGI Report Number **LG678539228**

Description **LABORATORY GROWN DIAMOND**

Shape and Cutting Style **CUT CORNERED
RECTANGULAR MODIFIED
BRILLIANT**

Measurements **12.47 X 8.71 X 5.84 MM**

GRADING RESULTS

Carat Weight **5.52 CARATS**

Color Grade **E**

Clarity Grade **VS 1**

January 23, 2025

IGI Report Number **LG678539228**

Description **LABORATORY GROWN DIAMOND**

Shape and Cutting Style **CUT CORNERED RECTANGULAR
MODIFIED BRILLIANT**

Measurements **12.47 X 8.71 X 5.84 MM**

GRADING RESULTS

Carat Weight **5.52 CARATS**

Color Grade **E**

Clarity Grade **VS 1**

ADDITIONAL GRADING INFORMATION

Polish **EXCELLENT**

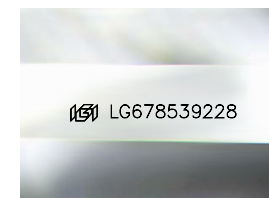
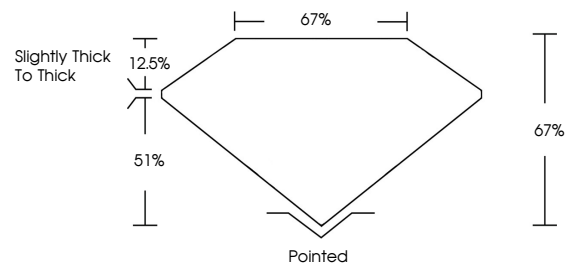
Symmetry **EXCELLENT**

Fluorescence **NONE**

Inscription(s) **IGI LG678539228**

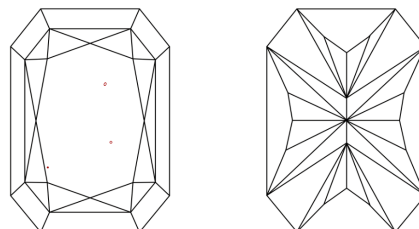
Comments: This Laboratory Grown Diamond was created by Chemical Vapor Deposition (CVD) growth process.
Type IIa

PROPORTIONS



Sample Image Used

CLARITY CHARACTERISTICS



KEY TO SYMBOLS

Red symbols indicate internal characteristics.
Green symbols indicate external characteristics.

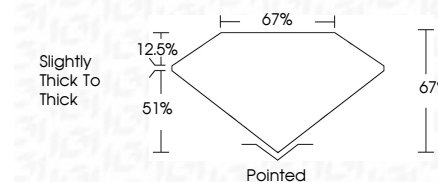
COLOR

D E F G H I J Faint Very Light Light

CLARITY

IF WS¹⁻² VS¹⁻² SI¹⁻² I¹⁻³

Internally Flawless Very Very Slightly Included Very Slightly Included Slightly Included Included



ADDITIONAL GRADING INFORMATION

Polish **EXCELLENT**

Symmetry **EXCELLENT**

Fluorescence **NONE**

Inscription(s) **IGI LG678539228**

Comments: This Laboratory Grown Diamond was created by Chemical Vapor Deposition (CVD) growth process.
Type IIa



IGI



January 23, 2025	IGI Report No LG678539228	CUT CORNERED RECT. MODIFIED BRILLIANT	12.47 X 8.71 X 5.84 MM	5.52 CARATS	E	VS 1	67%	67%	Slightly thick to thick	Pointed	EXCELLENT	EXCELLENT	NONE	IGI LG678539228
IGI	Carat Weight	Color Grade	Clarity Grade	Table	Depth	Graile	Culet	Polish	Symmetry	Fluorescence	Inscription(s)	Comments: This Laboratory Grown Diamond was created by Chemical Vapor Deposition (CVD) growth process. Type IIa		