



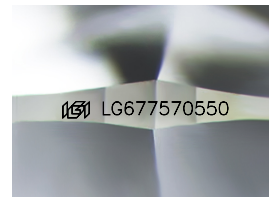
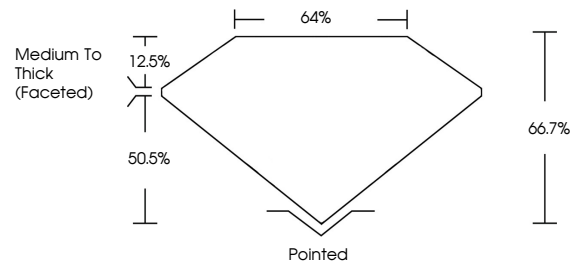
**INTERNATIONAL
GEMOLOGICAL
INSTITUTE**

ELECTRONIC COPY

LABORATORY GROWN DIAMOND REPORT

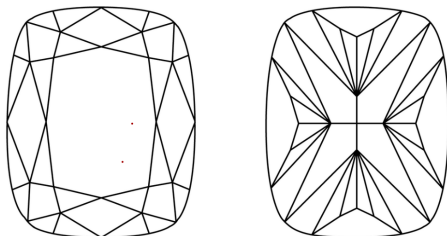
LG677570550
Report verification at igi.org

PROPORTIONS



Sample Image Used

CLARITY CHARACTERISTICS



KEY TO SYMBOLS

Red symbols indicate internal characteristics.
Green symbols indicate external characteristics.

COLOR

D E F G H I J Faint Very Light Light

CLARITY

IF WS¹⁻² VS¹⁻² SI¹⁻² I¹⁻³

Internally Flawless	Very Very Slightly Included	Very Slightly Included	Slightly Included	Included
------------------------	--------------------------------	---------------------------	----------------------	----------



© IGI 2020, International Gemological Institute

FD - 10 20

www.igi.org

 THIS DOCUMENT WAS PRODUCED WITH THE FOLLOWING SECURITY MEASURES: SPECIAL DOCUMENT PAPER, INK SCREENS, WATERMARK BACKGROUND DESIGNS, HOLOGRAM AND OTHER SECURITY FEATURES NOT LISTED AND DO EXCEED DOCUMENT SECURITY INDUSTRY GUIDELINES

LABORATORY GROWN DIAMOND REPORT



January 23, 2025

IGI Report Number **LG677570550**

Description	LABORATORY GROWN DIAMOND
-------------	--------------------------

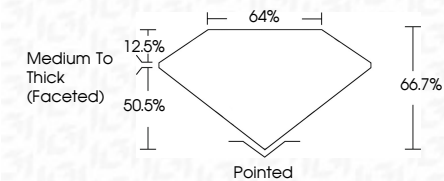
Shape and Cutting Style **CUSHION BRILLIANT**

Measurements **12.26 X 8.88 X 5.92 MM**

GRADING RESULTS

Carat Weight **5.10 CARATS**

Color Grade	F
-------------	---

Clarity Grade **VVS 2**

ADDITIONAL GRADING INFORMATION

Polish **EXCELLENT**Symmetry **EXCELLENT**Fluorescence **NONE**Inscription(s) LG67757055

Comments: This Laboratory Grown Diamond was created by Chemical Vapor Deposition (CVD) growth process.
Type IIa



IGI

January 23, 2025	IGI Report No LG5770590	CUSHION BRILLIANT	12.26 X 8.88 X 5.92 MM	Color Grade	F	5.10 CARATS
				Clarity Grade	VVS 2	
				Depth	66.7%	
				Table	64%	
				Girdle	Medium to Thick (faceted)	
				Culet	Pointed	
				Polish	EXCELLENT	
				Symmetry	EXCELLENT	
				Fluorescence	NONE	
				Inscriptions(s)	©IGI LG5770590	
Comments:			This Laboratory Grown Diamond was created by Chemical Vapor Deposition (CVD) growth process. Type Iia			

Comments:
This Laboratory Grown Diamond was created by Chemical Vapor Deposition (CVD) growth process.