

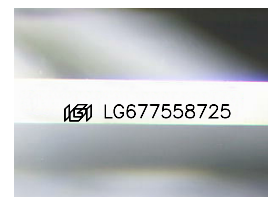
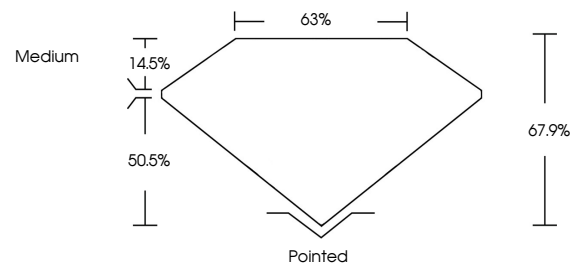


**ELECTRONIC COPY**

## LABORATORY GROWN DIAMOND REPORT

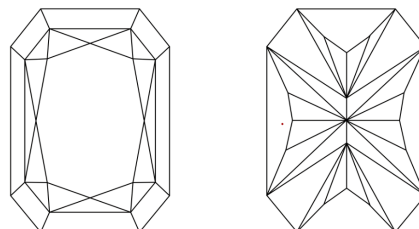
LG677558725  
Report verification at [igi.org](https://igi.org)

## PROPORTIONS



Sample Image Used

## CLARITY CHARACTERISTICS



## KEY TO SYMBOLS

Red symbols indicate internal characteristics.  
Green symbols indicate external characteristics.

## COLOR

D E F G H I J Faint Very Light Light

## CLARITY

IF                      VS<sup>1-2</sup>                      VS<sup>1-2</sup>                      S<sup>1-2</sup>                      |<sup>1-3</sup>

Internally Flawless	Very Very Slightly Included	Very Slightly Included	Slightly Included	Included
------------------------	--------------------------------	---------------------------	----------------------	----------

## LABORATORY GROWN DIAMOND REPORT



January 19, 2025

IGI Report Number **LG677558725**Description **LABORATORY GROWN DIAMOND**

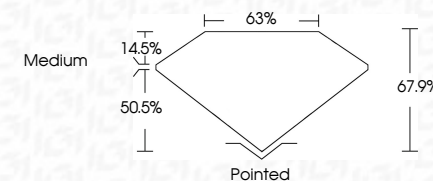
Shape and Cutting Style

Measurements **8.32 X 5.74 X 3.90 MM**

## GRADING RESULTS

Carat Weight **1.59 CARAT**

Color Grade D

Clarity Grade **VVS 1**

### ADDITIONAL GRADING INFORMATION

Polish EXCELLENT

Symmetry **EXCELLENT**Fluorescence **NONE**Inscription(s)  LG677558725

Comments: This Laboratory Grown Diamond was created by Chemical Vapor Deposition (CVD) growth process.  
Type IIa



© IGI 2020, International Gemological Institute

FD - 10 20

**www.igi.org**

THIS DOCUMENT WAS PRODUCED WITH THE FOLLOWING SECURITY MEASURES: SPECIAL DOCUMENT PAPER, INK SCREENS, WATERMARK, BACKGROUND DESIGNS, HOLOGRAM AND OTHER SECURITY FEATURES NOT LISTED AND DO EXCEED DOCUMENT SECURITY INDUSTRY GUIDELINE

January 19, 2025	GI CORNER NO LG67/559725	CUT REPORTED RECT. MODIFIED BRILLIANT
3.22 x 5.74 x 3.90 MM	Color Weight	1.59 CARAT
Color Grade	Clarity Grade	VVS 1
Depth	Table	67.9%
Girdle	Girdle	65%
Medium		Medium
Polish	Fluorescence	EXCELLENT
Symmetry	Inscriptions(s)	EXCELLENT
None		NONE
		689 LG67/559725

Comments: Very Gray Diamond was created by Chemical Vapor Deposition (CVD) growth process.  
Type IIa