

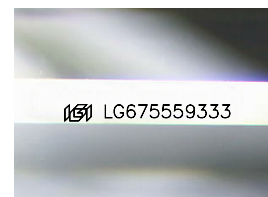
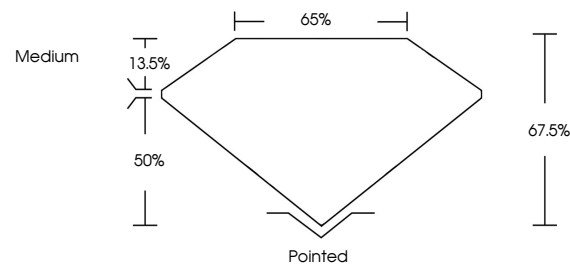


ELECTRONIC COPY

LABORATORY GROWN DIAMOND REPORT

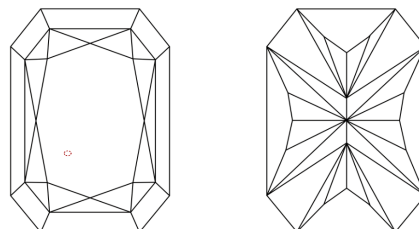
LG675559333
Report verification at igi.org

PROPORTIONS



Sample Image Used

CLARITY CHARACTERISTICS



KEY TO SYMBOLS

Red symbols indicate internal characteristics.
Green symbols indicate external characteristics.

COLOR

D E F G H I J Faint Very Light Light

CLARITY

IF	VS ¹⁻²	VS ¹⁻²	SI ¹⁻²	I ¹⁻³
Internally Flawless	Very Very Slightly Included	Very Slightly Included	Slightly Included	Included

LABORATORY GROWN DIAMOND REPORT



January 11, 2025

IGI Report Number **LG675559333**Description **LABORATORY GROWN DIAMOND**

Shape and Cutting Style

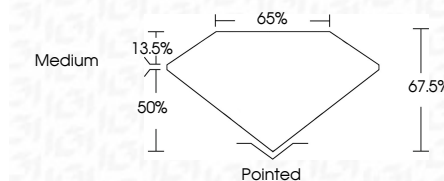
Measurements **6.99 X 5.17 X 3.49 MM**

GRADING RESULTS

Carat Weight 1.09 CARAT

Color Grade F

Clarity Grade VS 1



ADDITIONAL GRADING INFORMATION

Polish **EXCELLENT**Symmetry **EXCELLENT**Fluorescence NONEInscription(s)  LG675559333

Comments: This Laboratory Grown Diamond was created by Chemical Vapor Deposition (CVD) growth process.
Type IIa



© IGI 2020, International Gemological Institute

FD - 10 20

www.igi.org

THIS DOCUMENT WAS PRODUCED WITH THE FOLLOWING SECURITY MEASURES: SPECIAL DOCUMENT PAPER, INK SCREENS, WATERMARK, BACKGROUND DESIGNS, HOLOGRAM AND OTHER SECURITY FEATURES NOT LISTED AND DO EXCEED DOCUMENT SECURITY INDUSTRY GUIDELINE

January 11, 2025	Report No. LG57559333	CU CORNERED RECT. MODIFIED BRILLIANT
5.99 X 5.17 X 3.49 MM		
Carat Weight	2.09 CARAT	
Color Grade	F	
Clarity Grade	VS 1	
Depth	67.5%	
Table	65%	
Girdle	Medium	
Culet	Pointed	
Polish	EXCELLENT	
Symmetry	EXCELLENT	
Fluorescence	NONE	
Inscriptions(s)	1691 LG57559333	
Comments:	The Laboratory Grown Diamond was analyzed by Laser Raman Spectroscopy (LRS) and found to be a Natural Vapor Deposition (VD) growth process. Type IIG	