



ELECTRONIC COPY

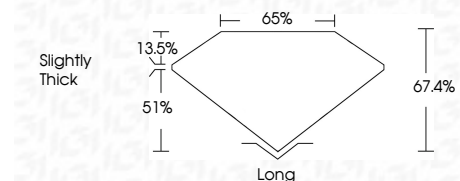
LG675533189
Report verification at igi.org



January 16, 2025
IGI Report Number **LG675533189**
Description **LABORATORY GROWN DIAMOND**
Shape and Cutting Style **EMERALD CUT**
Measurements **11.31 X 8.31 X 5.60 MM**

GRADING RESULTS

Carat Weight **5.10 CARATS**
Color Grade **F**
Clarity Grade **VS 1**



ADDITIONAL GRADING INFORMATION

Polish **EXCELLENT**
Symmetry **EXCELLENT**
Fluorescence **NONE**
Inscription(s) **IGI LG675533189**
Comments: This Laboratory Grown Diamond was created by Chemical Vapor Deposition (CVD) growth process. Type IIa



January 16, 2025
IGI Report No LG675533189
EMERALD CUT
11.31 X 8.31 X 5.60 MM
5.10 CARATS
F
Color Grade
VS 1
Clarity Grade
67.4%
Depth
65%
Table
Slightly Thick
Girdle
Long
Culet
EXCELLENT
Polish
EXCELLENT
Symmetry
NONE
Fluorescence
IGI LG675533189
Inscription(s)
Comments: This Laboratory Grown Diamond was created by Chemical Vapor Deposition (CVD) growth process. Type IIa

LABORATORY GROWN DIAMOND REPORT

January 16, 2025
IGI Report Number **LG675533189**
Description **LABORATORY GROWN DIAMOND**
Shape and Cutting Style **EMERALD CUT**
Measurements **11.31 X 8.31 X 5.60 MM**

GRADING RESULTS

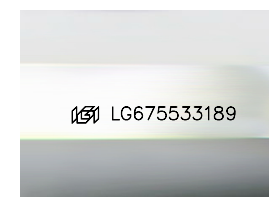
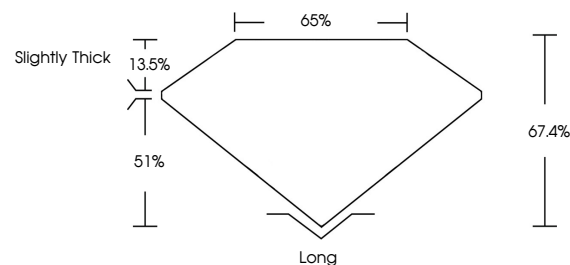
Carat Weight **5.10 CARATS**
Color Grade **F**
Clarity Grade **VS 1**

ADDITIONAL GRADING INFORMATION

Polish **EXCELLENT**
Symmetry **EXCELLENT**
Fluorescence **NONE**
Inscription(s) **IGI LG675533189**

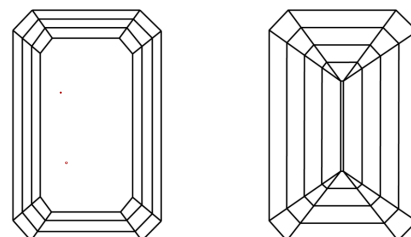
Comments: This Laboratory Grown Diamond was created by Chemical Vapor Deposition (CVD) growth process. Type IIa

PROPORTIONS



Sample Image Used

CLARITY CHARACTERISTICS



KEY TO SYMBOLS

Red symbols indicate internal characteristics.
Green symbols indicate external characteristics.

COLOR

D E F G H I J Faint Very Light Light

CLARITY

IF	VS ¹⁻²	VS ¹⁻²	SI ¹⁻²	I ¹⁻³
Internally Flawless	Very Very Slightly Included	Very Slightly Included	Slightly Included	Included

