



# INTERNATIONAL GEMOLOGICAL INSTITUTE

ELECTRONIC COPY

LG671452133



December 27, 2024

IGI Report Number LG671452133  
ROUND BRILLIANT  
LABORATORY GROWN DIAMOND  
6.41 - 6.43 X 3.92 MM

Carat Weight 0.99 CARAT  
Color Grade E  
Clarity Grade VS 1  
Cut Grade IDEAL  
Polish EXCELLENT  
Symmetry EXCELLENT  
Fluorescence NONE  
Inscription(s) IGI LG671452133

Comments: This Laboratory Grown Diamond was created by Chemical Vapor Deposition (CVD) growth process. Type IIa

## LABORATORY GROWN DIAMOND REPORT

December 27, 2024

IGI Report Number

LG671452133

Description

LABORATORY GROWN DIAMOND

Shape and Cutting Style

ROUND BRILLIANT

Measurements

6.41 - 6.43 X 3.92 MM

### GRADING RESULTS

Carat Weight 0.99 CARAT

Color Grade E

Clarity Grade VS 1

Cut Grade IDEAL

### ADDITIONAL GRADING INFORMATION

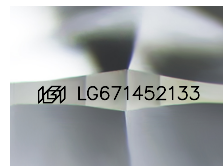
Polish EXCELLENT

Symmetry EXCELLENT

Fluorescence NONE

Inscription(s) IGI LG671452133

Comments: This Laboratory Grown Diamond was created by Chemical Vapor Deposition (CVD) growth process. Type IIa



Sample Image Used

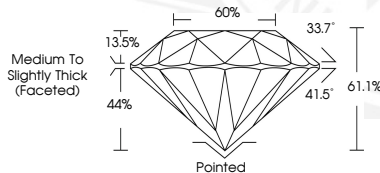


December 27, 2024

IGI Report Number LG671452133  
ROUND BRILLIANT  
LABORATORY GROWN DIAMOND  
6.41 - 6.43 X 3.92 MM

Carat Weight 0.99 CARAT  
Color Grade E  
Clarity Grade VS 1  
Cut Grade IDEAL  
Polish EXCELLENT  
Symmetry EXCELLENT  
Fluorescence NONE  
Inscription(s) IGI LG671452133

Comments: This Laboratory Grown Diamond was created by Chemical Vapor Deposition (CVD) growth process. Type IIa



THIS DOCUMENT WAS PRODUCED WITH THE FOLLOWING SECURITY MEASURES: SPECIAL DOCUMENT PAPER, INK SCREENS, WATERMARK BACKGROUND DESIGN, HOLOGRAM AND OTHER SECURITY FEATURES NOT LISTED AND DO EXCEED DOCUMENT SECURITY INDUSTRY GUIDELINES.

For terms & conditions and to verify this report, please visit [www.igi.org](http://www.igi.org)