



ELECTRONIC COPY

LABORATORY GROWN DIAMOND REPORT

December 19, 2024
IGI Report Number LG670411269
Description LABORATORY GROWN DIAMOND
Shape and Cutting Style EMERALD CUT
Measurements 10.20 X 7.60 X 5.25 MM

GRADING RESULTS

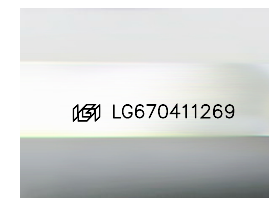
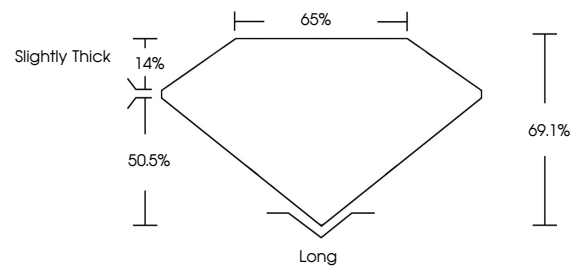
Carat Weight 4.03 CARATS
Color Grade E
Clarity Grade VS 1

ADDITIONAL GRADING INFORMATION

Polish EXCELLENT
Symmetry EXCELLENT
Fluorescence NONE
Inscription(s) IGI LG670411269

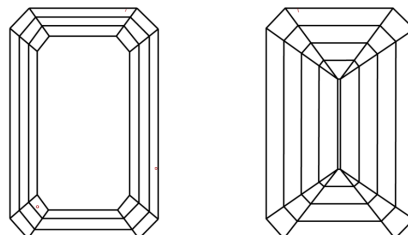
Comments: This Laboratory Grown Diamond was created by Chemical Vapor Deposition (CVD) growth process. Type IIa

PROPORTIONS



Sample Image Used

CLARITY CHARACTERISTICS



KEY TO SYMBOLS

Red symbols indicate internal characteristics.
Green symbols indicate external characteristics.

COLOR

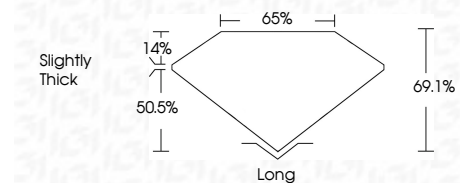
D E F G H I J Faint Very Light Light

CLARITY

IF WS¹⁻² VS¹⁻² SI¹⁻² I¹⁻³
Internally Flawless Very Very Slightly Included Very Slightly Included Slightly Included Included



December 19, 2024
IGI Report Number LG670411269
Description LABORATORY GROWN DIAMOND
Shape and Cutting Style EMERALD CUT
Measurements 10.20 X 7.60 X 5.25 MM
GRADING RESULTS
Carat Weight 4.03 CARATS
Color Grade E
Clarity Grade VS 1



ADDITIONAL GRADING INFORMATION

Polish EXCELLENT
Symmetry EXCELLENT
Fluorescence NONE
Inscription(s) IGI LG670411269
Comments: This Laboratory Grown Diamond was created by Chemical Vapor Deposition (CVD) growth process. Type IIa



IGI



December 19, 2024
IGI Report No LG670411269
EMERALD CUT
10.20 X 7.60 X 5.25 MM
4.03 CARATS
E
VS 1
69.1%
50.5%
Slightly Thick
Long
EXCELLENT
EXCELLENT
NONE
IGI LG670411269
Comments: This Laboratory Grown Diamond was created by Chemical Vapor Deposition (CVD) growth process. Type IIa