



**ELECTRONIC COPY**

LG669477290  
Report verification at igi.org



December 17, 2024

IGI Report Number **LG669477290**

Description **LABORATORY GROWN DIAMOND**

Shape and Cutting Style **CUSHION BRILLIANT**

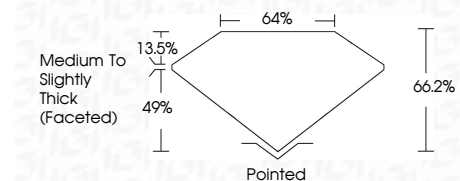
Measurements **8.12 X 5.89 X 3.90 MM**

**GRADING RESULTS**

Carat Weight **1.46 CARAT**

Color Grade **E**

Clarity Grade **VVS 2**



**ADDITIONAL GRADING INFORMATION**

Polish **EXCELLENT**

Symmetry **EXCELLENT**

Fluorescence **NONE**

Inscription(s) **IGI LG669477290**

Comments: This Laboratory Grown Diamond was created by Chemical Vapor Deposition (CVD) growth process. Type IIa



|                          |                           |                              |   |                    |              |              |                                    |              |               |                 |                     |                       |
|--------------------------|---------------------------|------------------------------|---|--------------------|--------------|--------------|------------------------------------|--------------|---------------|-----------------|---------------------|-----------------------|
| December 17, 2024        | IGI Report No LG669477290 | 1.46 CARAT                   | E | VVS 2              | 66.2%        | 49%          | Medium to Slightly Thick (Faceted) | Pointed      | EXCELLENT     | EXCELLENT       | NONE                | IGI LG669477290       |
| <b>CUSHION BRILLIANT</b> |                           | <b>8.12 X 5.89 X 3.90 MM</b> |   | <b>Color Grade</b> | <b>Depth</b> | <b>Table</b> | <b>Girdle</b>                      | <b>Culet</b> | <b>Polish</b> | <b>Symmetry</b> | <b>Fluorescence</b> | <b>Inscription(s)</b> |

Comments: This Laboratory Grown Diamond was created by Chemical Vapor Deposition (CVD) growth process. Type IIa

**LABORATORY GROWN DIAMOND REPORT**

December 17, 2024

IGI Report Number **LG669477290**

Description **LABORATORY GROWN DIAMOND**

Shape and Cutting Style **CUSHION BRILLIANT**

Measurements **8.12 X 5.89 X 3.90 MM**

**GRADING RESULTS**

Carat Weight **1.46 CARAT**

Color Grade **E**

Clarity Grade **VVS 2**

**ADDITIONAL GRADING INFORMATION**

Polish **EXCELLENT**

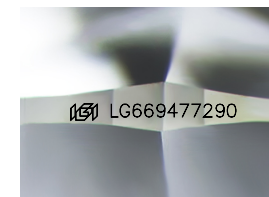
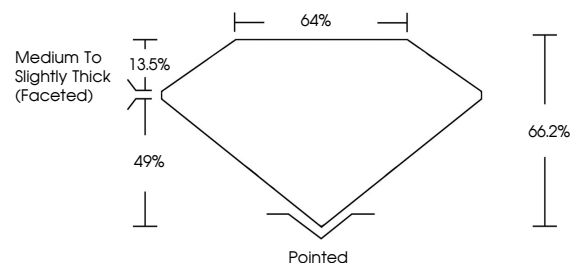
Symmetry **EXCELLENT**

Fluorescence **NONE**

Inscription(s) **IGI LG669477290**

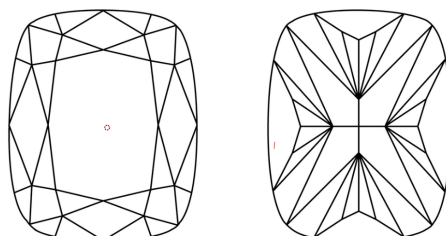
Comments: This Laboratory Grown Diamond was created by Chemical Vapor Deposition (CVD) growth process. Type IIa

**PROPORTIONS**



Sample Image Used

**CLARITY CHARACTERISTICS**



**KEY TO SYMBOLS**

Red symbols indicate internal characteristics.  
Green symbols indicate external characteristics.

**COLOR**

D E F G H I J Faint Very Light Light

**CLARITY**

IF WS<sup>1-2</sup> VS<sup>1-2</sup> SI<sup>1-2</sup> I<sup>1-3</sup>

Internally Flawless Very Very Slightly Included Very Slightly Included Slightly Included Included

