

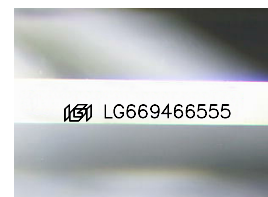
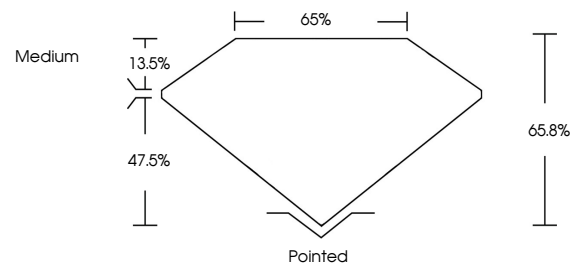


**ELECTRONIC COPY**

## LABORATORY GROWN DIAMOND REPORT

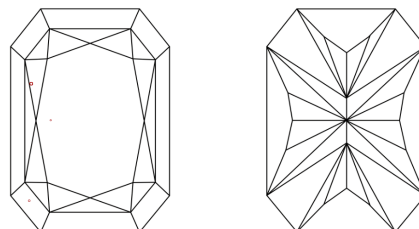
LG669466555  
Report verification at [igi.org](https://igi.org)

## PROPORTIONS



Sample Image Used

## CLARITY CHARACTERISTICS



## KEY TO SYMBOLS

Red symbols indicate internal characteristics.  
Green symbols indicate external characteristics.

## COLOR

D E F G H I J Faint Very Light Light

## CLARITY

IF	VS <sup>1-2</sup>	VS <sup>1-2</sup>	SI <sup>1-2</sup>	I <sup>1-3</sup>
Internally Flawless	Very Very Slightly Included	Very Slightly Included	Slightly Included	Included

## LABORATORY GROWN DIAMOND REPORT



December 14, 2024

IGI Report Number **LG669466555**Description **LABORATORY GROWN DIAMOND**

Shape and Cutting Style

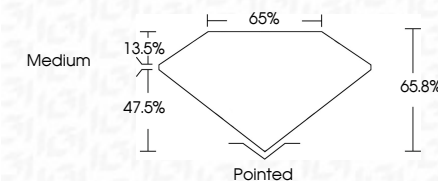
Measurements **7.17 X 5.11 X 3.36 MM**

## GRADING RESULTS

Carat Weight 1.09 CARAT

Color Grade	F
-------------	---

Clarity Grade VS 1



### ADDITIONAL GRADING INFORMATION

Polish **EXCELLENT**Symmetry **EXCELLENT**Fluorescence **NONE**Inscription(s)  LG669466555

Comments: This Laboratory Grown Diamond was created by Chemical Vapor Deposition (CVD) growth process.  
Type IIa



© IGI 2020, International Gemological Institute

FD - 10 20

**www.igi.org**

THIS DOCUMENT WAS PRODUCED WITH THE FOLLOWING SECURITY MEASURES: SPECIAL DOCUMENT PAPER, INK SCREENS, WATERMARK, BACKGROUND DESIGNS, HOLOGRAM AND OTHER SECURITY FEATURES NOT LISTED AND DO EXCEED DOCUMENT SECURITY INDUSTRY GUIDELINE

December 14, 2024	GI CORNERD RECT. MODIFIED BRILLIANT	1.09 CARAT	F	Vs1	65.6%	65%	Medium	Pointed	EXCELLENT	EXCELLENT	NONE	1881LG56946555		
December 14, 2024	GI CORNERD RECT. MODIFIED BRILLIANT	1.17 X 6.11 X 3.36 MM	Color	Grade	Clarity	Grade	Depth	Table	Girdle	Culet	Pash	Symmetry	Fluorescence	Inscriptions(s)
December 14, 2024	GI CORNERD RECT. MODIFIED BRILLIANT	1.17 X 6.11 X 3.36 MM	Color	Grade	Clarity	Grade	Depth	Table	Girdle	Culet	Pash	Symmetry	Fluorescence	Inscriptions(s)