



**ELECTRONIC COPY**

LG669453885  
Report verification at igi.org



December 13, 2024

IGI Report Number **LG669453885**

Description **LABORATORY GROWN DIAMOND**

Shape and Cutting Style **EMERALD CUT**

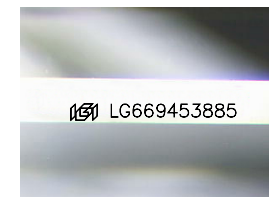
Measurements **7.77 X 5.56 X 3.69 MM**

**GRADING RESULTS**

Carat Weight **1.57 CARAT**

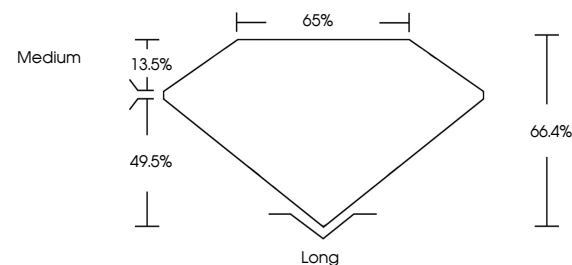
Color Grade **D**

Clarity Grade **VVS 2**

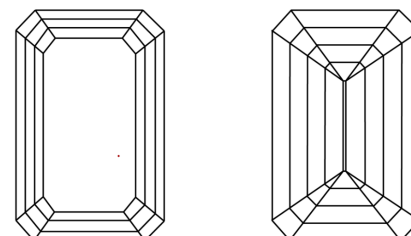


Sample Image Used

**PROPORTIONS**



**CLARITY CHARACTERISTICS**



**KEY TO SYMBOLS**

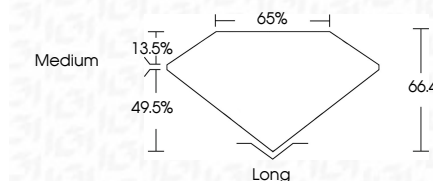
Red symbols indicate internal characteristics.  
Green symbols indicate external characteristics.

**COLOR**

D E F G H I J Faint Very Light Light

**CLARITY**

IF	VS <sup>1-2</sup>	VS <sup>1-2</sup>	SI <sup>1-2</sup>	I <sup>1-3</sup>
Internally Flawless	Very Very Slightly Included	Very Slightly Included	Slightly Included	Included



**ADDITIONAL GRADING INFORMATION**

Polish **EXCELLENT**

Symmetry **EXCELLENT**

Fluorescence **NONE**

Inscription(s) **IGI LG669453885**

Comments: This Laboratory Grown Diamond was created by Chemical Vapor Deposition (CVD) growth process.  
Type IIa



December 13, 2024	1.57 CARAT	D	VVS 2	66.4%	65%	Medium	Long
IGI Report No LG669453885	7.77 X 5.56 X 3.69 MM	EMERALD CUT	EXCELLENT	EXCELLENT	NONE	IGI LG669453885	EXCELLENT
Carat Weight	Color Grade	Clarity Grade	Table	Depth	Girdle	Culet	Polish
Symmetry	Fluorescence	Inscription(s)					

Comments: This Laboratory Grown Diamond was created by Chemical Vapor Deposition (CVD) growth process.  
Type IIa