



**ELECTRONIC COPY**

## LABORATORY GROWN DIAMOND REPORT

December 9, 2024	
IGI Report Number	LG668468205
Description	LABORATORY GROWN DIAMOND
Shape and Cutting Style	SQUARE EMERALD CUT
Measurements	7.90 X 7.82 X 5.44 MM

## GRADING RESULTS

Carat Weight	3.08 CARATS
Color Grade	E
Clarity Grade	VS 1

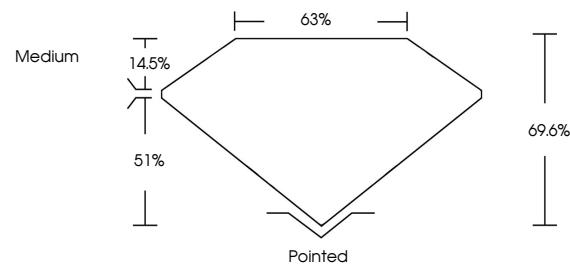
### ADDITIONAL GRADING INFORMATION

Polish	EXCELLENT
Symmetry	EXCELLENT
Fluorescence	NONE
Inscription(s)	 LG668468205

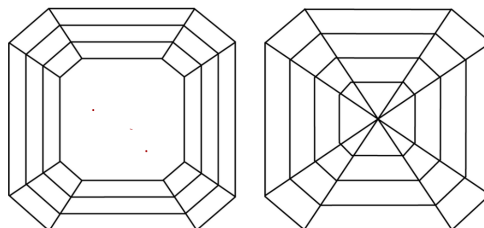
Comments: This Laboratory Grown Diamond was created by Chemical Vapor Deposition (CVD) growth process.  
Type IIa

LG668468205  
Report verification at [igi.org](https://igi.org)

## PROPORTIONS

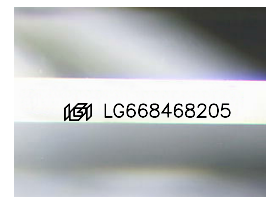


## CLARITY CHARACTERISTICS



## KEY TO SYMBOLS

Red symbols indicate internal characteristics.  
Green symbols indicate external characteristics.



Sample Image Used

**COLOR**

D E F G H I J Faint Very Light Light

## CLARITY

IF	VS <sup>1-2</sup>	VS <sup>1-2</sup>	SI <sup>1-2</sup>	I <sup>1-3</sup>
Internally Flawless	Very Very Slightly Included	Very Slightly Included	Slightly Included	Included

## LABORATORY GROWN DIAMOND REPORT



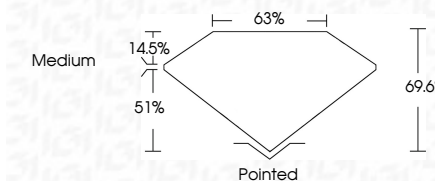
December 9, 2024	
IGI Report Number	LG668468205
Description	LABORATORY GROWN DIAMOND
Shape and Cutting Style	SQUARE EMERALD CUT
Measurements	7.90 X 7.82 X 5.44 MM

## GRADING RESULTS

Carat Weight	3.08 CARATS
Color Grade	E
Clarity Grade	VS 1

### ADDITIONAL GRADING INFORMATION

Polish	EXCELLENT
Symmetry	EXCELLENT
Fluorescence	NONE
Inscription(s)	 LG668468205
<p>Comments: This Laboratory Grown Diamond was created by Chemical Vapor Deposition (CVD) growth process.</p> <p>Type IIa</p>	



December 9, 2024	GI Report No. LG564462005	SQUARE EMERALD CUT
0.90 X 7.85 X 5.44 MM	Carat Weight	3.08 CARATS
	Color Grade	E
	Clarity Grade	VS 1
	Depth	69.6%
	Table	65%
	Girdle	Medium
	Culet	Pointed
	Polish	EXCELLENT
	Symmetry	EXCELLENT
	Fluorescence	NONE
	Inscriptions(s)	689 LG564462005

Comments: This is a Fancy Green Diamond was created by Chemical Vapor Deposition (CVD) growth process.

Type IIa

**Comments:**  
This Laboratory Grown Diamond was  
created by Chemical Vapor Deposition  
(CVD) growth process.