



**ELECTRONIC COPY**

LG667448474  
Report verification at igi.org



December 3, 2024

IGI Report Number **LG667448474**

Description **LABORATORY GROWN DIAMOND**

Shape and Cutting Style **OVAL BRILLIANT**

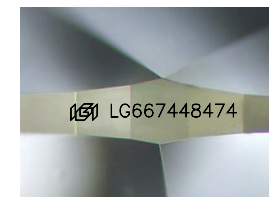
Measurements **9.10 X 6.39 X 4.00 MM**

**GRADING RESULTS**

Carat Weight **1.48 CARAT**

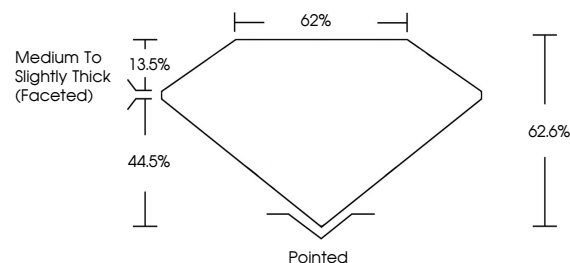
Color Grade **D**

Clarity Grade **VVS 2**

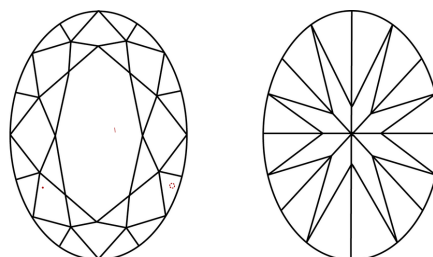


Sample Image Used

**PROPORTIONS**



**CLARITY CHARACTERISTICS**



**KEY TO SYMBOLS**

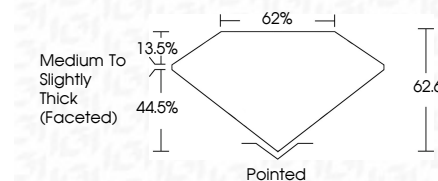
Red symbols indicate internal characteristics.  
Green symbols indicate external characteristics.

**COLOR**

D E F G H I J Faint Very Light Light

**CLARITY**

IF	VS <sup>1-2</sup>	VS <sup>1-2</sup>	SI <sup>1-2</sup>	I <sup>1-3</sup>
Internally Flawless	Very Very Slightly Included	Very Slightly Included	Slightly Included	Included



**ADDITIONAL GRADING INFORMATION**

Polish **EXCELLENT**

Symmetry **EXCELLENT**

Fluorescence **NONE**

Inscription(s) **IGI LG667448474**

Comments: This Laboratory Grown Diamond was created by Chemical Vapor Deposition (CVD) growth process.  
Type IIa



**IGI**



December 3, 2024  
IGI Report No LG667448474  
OVAL BRILLIANT  
9.10 X 6.39 X 4.00 MM  
Carat Weight 1.48 CARAT  
Color Grade D  
Clarity Grade VVS 2  
Depth 44.5%  
Table 13.5%  
Girdle 62%  
Medium to Slightly Thick (Faceted)  
Culet Pointed  
Polish EXCELLENT  
Symmetry EXCELLENT  
Fluorescence NONE  
Inscription(s) IGI LG667448474

Comments: This Laboratory Grown Diamond was created by Chemical Vapor Deposition (CVD) growth process.  
Type IIa