



ELECTRONIC COPY

LG667416795
Report verification at igi.org



November 28, 2024

IGI Report Number **LG667416795**

Description **LABORATORY GROWN DIAMOND**

Shape and Cutting Style **CUT CORNERED
RECTANGULAR MODIFIED
BRILLIANT**

Measurements **8.05 X 5.75 X 3.86 MM**

GRADING RESULTS

Carat Weight **1.57 CARAT**

Color Grade **F**

Clarity Grade **VS 1**

November 28, 2024
IGI Report Number **LG667416795**
Description **LABORATORY GROWN DIAMOND**
Shape and Cutting Style **CUT CORNERED RECTANGULAR
MODIFIED BRILLIANT**
Measurements **8.05 X 5.75 X 3.86 MM**

GRADING RESULTS

Carat Weight **1.57 CARAT**

Color Grade **F**

Clarity Grade **VS 1**

ADDITIONAL GRADING INFORMATION

Polish **EXCELLENT**

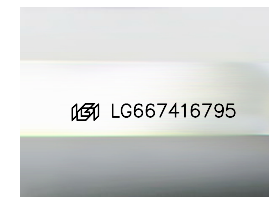
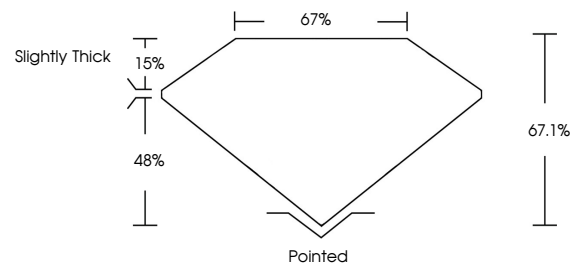
Symmetry **EXCELLENT**

Fluorescence **NONE**

Inscription(s) **IGI LG667416795**

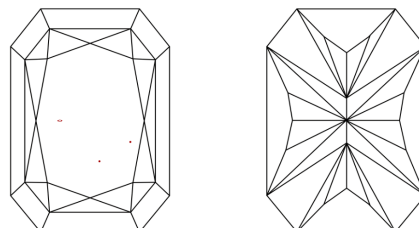
Comments: This Laboratory Grown Diamond was created by Chemical Vapor Deposition (CVD) growth process.
Type IIa

PROPORTIONS



Sample Image Used

CLARITY CHARACTERISTICS



KEY TO SYMBOLS

Red symbols indicate internal characteristics.
Green symbols indicate external characteristics.

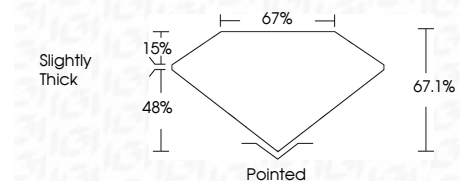
COLOR

D E F G H I J Faint Very Light Light

CLARITY

IF VS¹⁻² VS¹⁻² SI¹⁻² I¹⁻³

Internally Flawless Very Very Slightly Included Very Slightly Included Slightly Included Included



ADDITIONAL GRADING INFORMATION

Polish **EXCELLENT**

Symmetry **EXCELLENT**

Fluorescence **NONE**

Inscription(s) **IGI LG667416795**

Comments: This Laboratory Grown Diamond was created by Chemical Vapor Deposition (CVD) growth process.
Type IIa



IGI



November 28, 2024
IGI Report No LG667416795
CUT CORNERED RECT. MODIFIED BRILLIANT
8.05 X 5.75 X 3.86 MM
Carat Weight 1.57 CARAT
Color Grade F
Clarity Grade VS 1
Depth 67.1%
Table 67%
Girdle Slightly Thick
Culet Pointed
Polish EXCELLENT
Symmetry EXCELLENT
Fluorescence NONE
Inscription(s) IGI LG667416795
Comments: This Laboratory Grown Diamond was created by Chemical Vapor Deposition (CVD) growth process.
Type IIa