



**ELECTRONIC COPY**

## LABORATORY GROWN DIAMOND REPORT

LG666432579  
Report verification at [igi.org](https://igi.org)

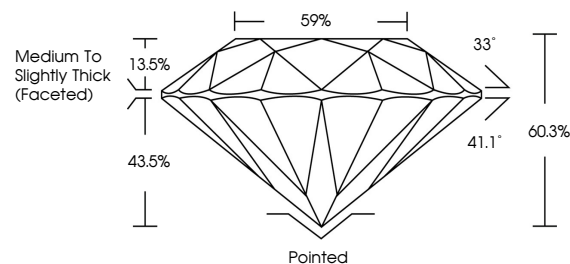
December 9, 2024	
IGI Report Number	LG666432579
Description	LABORATORY GROWN DIAMOND
Shape and Cutting Style	ROUND BRILLIANT
Measurements	8.25 - 8.27 X 4.98 MM
GRADING RESULTS	
Carat Weight	2.07 CARATS
Color Grade	E
Clarity Grade	VVS 2
Cut Grade	IDEAL

### ADDITIONAL GRADING INFORMATION

Polish	EXCELLENT
Symmetry	EXCELLENT
Fluorescence	NONE
Inscription(s)	15 LG666432579

Comments: This Laboratory Grown Diamond was created by Chemical Vapor Deposition (CVD) growth process.  
Type IIa

## PROPORTIONS



## COLOR

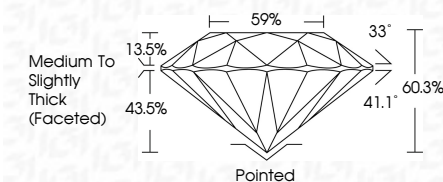
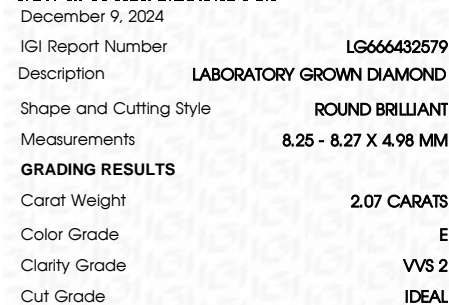
D E F G H I J Faint Very Light Light

## CLARITY

IF	VS <sup>1-2</sup>	VS <sup>1-2</sup>	SI <sup>1-2</sup>	I <sup>1-3</sup>
Internally Flawless	Very Very Slightly Included	Very Slightly Included	Slightly Included	Included

© IGI 2020, International Gemological Institute

FD - 10 20



### ADDITIONAL GRADING INFORMATION

Polish	EXCELLENT
Symmetry	EXCELLENT
Fluorescence	NONE
Inscription(s)	(修) LG666432579
Comments: This Laboratory Grown Diamond was created by Chemical Vapor Deposition (CVD) growth process.	
Type IIa	



December 9, 2024  
GI Report No LG666432579  
ROUND BRILLIANT

2.07 CARATS	Carat Weight	2.07
Color Grade	Color Grade	E
Clarity Grade	Clarity Grade	VVS 2
Cut Grade	Cut Grade	IDP AL
Depth	Depth	60.9%
Table	Table	59%
Grade	Grade	Medium to Slightly Thick (Faceted)
Culet	Culet	Pointed
Polish	Polish	Excellent
Symmetry	Symmetry	Excellent
Fluorescence	Fluorescence	None

**Comments:**  
This Laboratory Grown Diamond was created by Chemical Vapor Deposition (CVD) growth process.

**www.igi.org**

THIS DOCUMENT WAS PRODUCED WITH THE FOLLOWING SECURITY MEASURES: SPECIAL DOCUMENT PAPER, INK SCREENS, WATERMARK BACKGROUND PATTERN, 110-DPM, AND OTHER SECURITY FEATURES NOT LISTED. 1 AND 20 PAGES. DO NOT REPRODUCE OR TRANSMIT WITHOUT PERMISSION.