



**ELECTRONIC COPY**

LG665430525  
Report verification at igi.org



November 18, 2024

IGI Report Number **LG665430525**

Description **LABORATORY GROWN DIAMOND**

Shape and Cutting Style **PRINCESS CUT**

Measurements **6.20 X 6.12 X 4.40 MM**

**GRADING RESULTS**

Carat Weight **1.48 CARAT**

Color Grade **F**

Clarity Grade **VS 1**

November 18, 2024  
IGI Report Number **LG665430525**  
Description **LABORATORY GROWN DIAMOND**  
Shape and Cutting Style **PRINCESS CUT**  
Measurements **6.20 X 6.12 X 4.40 MM**

**GRADING RESULTS**

Carat Weight **1.48 CARAT**

Color Grade **F**

Clarity Grade **VS 1**

**ADDITIONAL GRADING INFORMATION**

Polish **EXCELLENT**

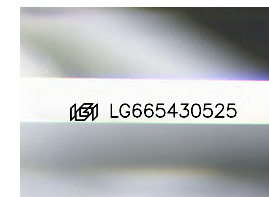
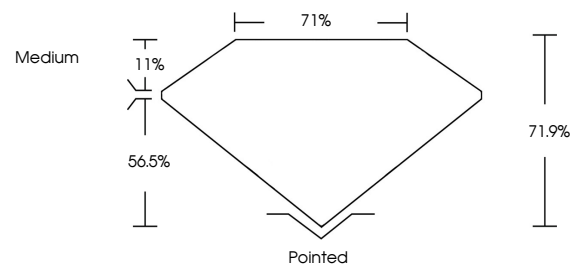
Symmetry **EXCELLENT**

Fluorescence **NONE**

Inscription(s) **LG665430525**

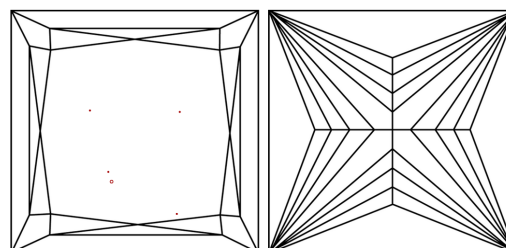
Comments: This Laboratory Grown Diamond was created by Chemical Vapor Deposition (CVD) growth process.  
Type IIa

**PROPORTIONS**



Sample Image Used

**CLARITY CHARACTERISTICS**



**KEY TO SYMBOLS**

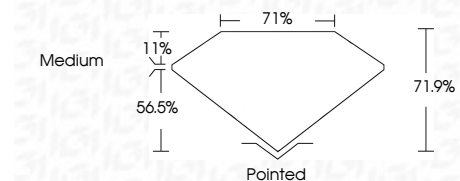
Red symbols indicate internal characteristics.  
Green symbols indicate external characteristics.

**COLOR**

D E F G H I J Faint Very Light Light

**CLARITY**

IF	VS <sup>1-2</sup>	VS <sup>1-2</sup>	SI <sup>1-2</sup>	I <sup>1-3</sup>
Internally Flawless	Very Very Slightly Included	Very Slightly Included	Slightly Included	Included



**ADDITIONAL GRADING INFORMATION**

Polish **EXCELLENT**

Symmetry **EXCELLENT**

Fluorescence **NONE**

Inscription(s) **LG665430525**

Comments: This Laboratory Grown Diamond was created by Chemical Vapor Deposition (CVD) growth process.  
Type IIa



November 18, 2024  
IGI Report No. **LG665430525**  
**PRINCESS CUT**

**1.48 CARAT**  
F

Carat Weight **1.48**  
Color Grade **F**

Clarity Grade **VS 1**  
Depth **56.5%**  
Table **11%**  
Girdle **Medium**

Culet **Pointed**  
Polish **EXCELLENT**  
Symmetry **EXCELLENT**  
Fluorescence **NONE**  
Inscription(s) **LG665430525**

Comments: This Laboratory Grown Diamond was created by Chemical Vapor Deposition (CVD) growth process.  
Type IIa