



ELECTRONIC COPY

LABORATORY GROWN DIAMOND REPORT

October 23, 2024
IGI Report Number **LG662431023**
Description **LABORATORY GROWN DIAMOND**
Shape and Cutting Style **CUT CORNERED RECTANGULAR MODIFIED BRILLIANT**
Measurements **8.99 X 6.18 X 4.21 MM**

GRADING RESULTS

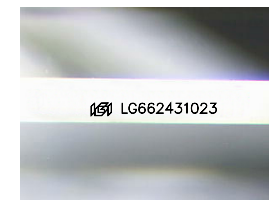
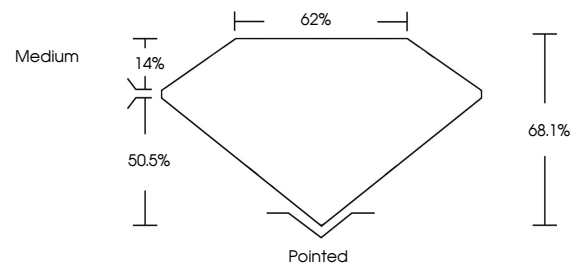
Carat Weight **2.03 CARATS**
Color Grade **D**
Clarity Grade **VS 2**

ADDITIONAL GRADING INFORMATION

Polish **EXCELLENT**
Symmetry **EXCELLENT**
Fluorescence **NONE**
Inscription(s) **IGI LG662431023**

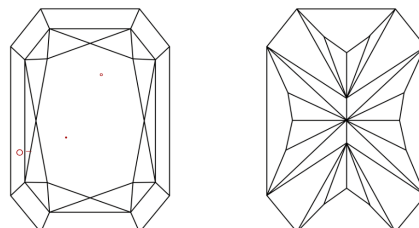
Comments: This Laboratory Grown Diamond was created by Chemical Vapor Deposition (CVD) growth process.
Type IIa

PROPORTIONS



Sample Image Used

CLARITY CHARACTERISTICS



KEY TO SYMBOLS

Red symbols indicate internal characteristics.
Green symbols indicate external characteristics.

COLOR

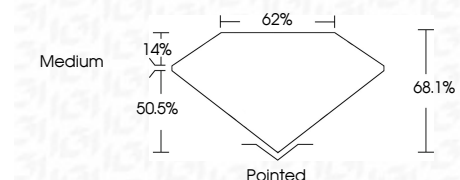
D E F G H I J Faint Very Light Light

CLARITY

| | | | | |
|---------------------|-----------------------------|------------------------|-------------------|----------|
| IF | VS 1-2 | VS 1-2 | SI 1-2 | I 1-3 |
| Internally Flawless | Very Very Slightly Included | Very Slightly Included | Slightly Included | Included |



October 23, 2024
IGI Report Number **LG662431023**
Description **LABORATORY GROWN DIAMOND**
Shape and Cutting Style **CUT CORNERED RECTANGULAR MODIFIED BRILLIANT**
Measurements **8.99 X 6.18 X 4.21 MM**
GRADING RESULTS
Carat Weight **2.03 CARATS**
Color Grade **D**
Clarity Grade **VS 2**



ADDITIONAL GRADING INFORMATION

Polish **EXCELLENT**
Symmetry **EXCELLENT**
Fluorescence **NONE**
Inscription(s) **IGI LG662431023**
Comments: This Laboratory Grown Diamond was created by Chemical Vapor Deposition (CVD) growth process.
Type IIa



October 23, 2024
IGI Report No. LG662431023
CUT CORNERED RECT. MODIFIED BRILLIANT
8.99 X 6.18 X 4.21 MM
2.03 CARATS
D
VS 2
68.1%
62%
Medium
Pointed
EXCELLENT
EXCELLENT
NONE
IGI LG662431023

Comments: This Laboratory Grown Diamond was created by Chemical Vapor Deposition (CVD) growth process.
Type IIa