



ELECTRONIC COPY

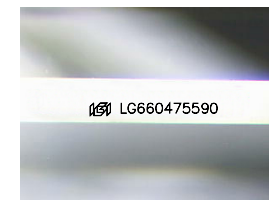
LG660475590
Report verification at igi.org



October 22, 2024
IGI Report Number **LG660475590**
Description **LABORATORY GROWN DIAMOND**

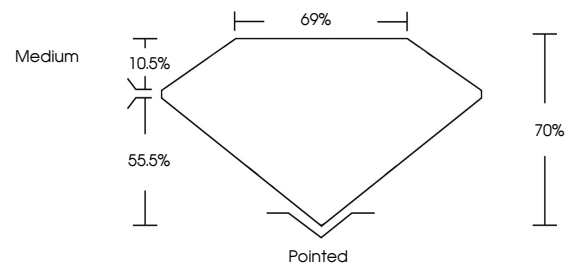
Shape and Cutting Style **PRINCESS CUT**
Measurements **7.29 X 7.17 X 5.02 MM**

GRADING RESULTS
Carat Weight **2.34 CARATS**
Color Grade **F**
Clarity Grade **VVS 2**

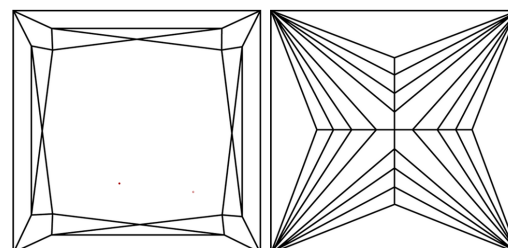


Sample Image Used

PROPORTIONS



CLARITY CHARACTERISTICS



KEY TO SYMBOLS

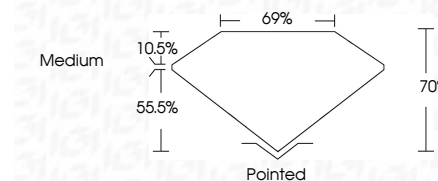
Red symbols indicate internal characteristics.
Green symbols indicate external characteristics.

COLOR

D E F G H I J Faint Very Light Light

CLARITY

IF	VS ¹⁻²	VS ¹⁻²	SI ¹⁻²	I ¹⁻³
Internally Flawless	Very Very Slightly Included	Very Slightly Included	Slightly Included	Included



ADDITIONAL GRADING INFORMATION

Polish **EXCELLENT**
Symmetry **EXCELLENT**
Fluorescence **NONE**
Inscription(s) **IGI LG660475590**
Comments: This Laboratory Grown Diamond was created by Chemical Vapor Deposition (CVD) growth process.
Type IIa



October 22, 2024
IGI Report No. **LG660475590**
PRINCESS CUT
2.34 CARATS
Color Grade **F**
Clarity Grade **VVS 2**
Depth **70%**
Table **69%**
Girdle **Medium**
Culet **Pointed**
Polish **EXCELLENT**
Symmetry **EXCELLENT**
Fluorescence **NONE**
Inscription(s) **IGI LG660475590**
Comments: This Laboratory Grown Diamond was created by Chemical Vapor Deposition (CVD) growth process.
Type IIa