



**ELECTRONIC COPY**

## LABORATORY GROWN DIAMOND REPORT

October 18, 2024	
IGI Report Number	LG660461639
Description	LABORATORY GROWN DIAMOND
Shape and Cutting Style	CUT CORNERED RECTANGULAR MODIFIED BRILLIANT
Measurements	7.52 X 5.15 X 3.52 MM

## GRADING RESULTS

Carat Weight	1.21 CARAT
Color Grade	E
Clarity Grade	VS 2

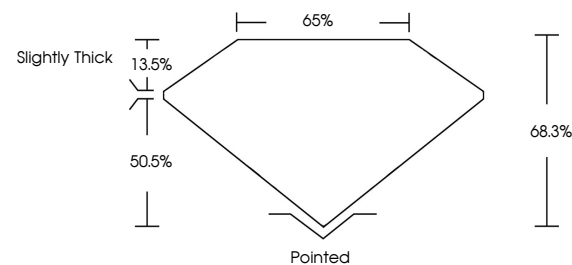
### ADDITIONAL GRADING INFORMATION

Polish	EXCELLENT
Symmetry	EXCELLENT
Fluorescence	NONE
Inscription(s)	LG660461639

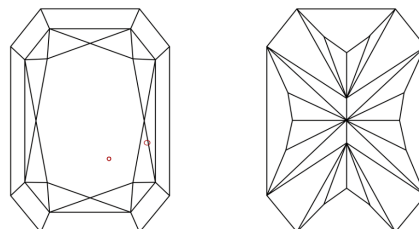
Comments: This Laboratory Grown Diamond was created by Chemical Vapor Deposition (CVD) growth process.  
Type IIa

LG660461639  
Report verification at [igi.org](https://igi.org)

## PROPORTIONS

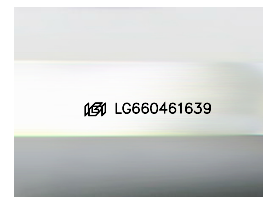


## CLARITY CHARACTERISTICS



### KEY TO SYMBOLS

Red symbols indicate internal characteristics.  
Green symbols indicate external characteristics.



Sample Image Used

## COLOR

D E F G H I J Faint Very Light Light

## CLARITY

IF	VVS <sup>1-2</sup>	VS <sup>1-2</sup>	SI <sup>1-2</sup>	I <sup>1-3</sup>
Internally Flawless	Very Very Slightly Included	Very Slightly Included	Slightly Included	Included



© IGI 2020, International Gemological Institute

FD - 10 20

**www.igi.org**

## LABORATORY GROWN DIAMOND REPORT

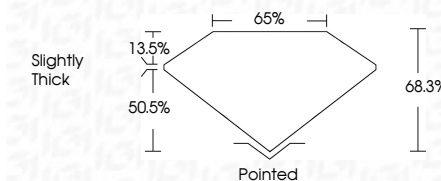


October 18, 2024	
IGI Report Number	LG660461639
Description	LABORATORY GROWN DIAMOND
Shape and Cutting Style	CUT CORNERED RECTANGULAR MODIFIED BRILLIANT

Measurements **7.52 X 5.15 X 3.52 MM**

## GRADING RESULTS

Carat Weight	1.21 CARAT
Color Grade	E
Clarity Grade	VS 2



### ADDITIONAL GRADING INFORMATION

Polish	EXCELLENT
Symmetry	EXCELLENT
Fluorescence	NONE
Inscription(s)	 LG660461639

Comments: This Laboratory Grown Diamond was created by Chemical Vapor Deposition (CVD) growth process.  
Type IIa



October 18, 2024	GI Report No. LG560461639
CUJ CORNERED RECT. MODIFIED BRILLIANT	
5.52 X 5.15 X 3.52 MM	
Carat Weight	1.21 CARAT
Color Grade	E
Clarity Grade	VS 2
Depth	68.3%
Table	65%
Girdle	Slightly Thick
Culet	Pointed
Poleish	EXCELLENT
Symmetry	EXCELLENT
Fluorescence	NONE
Inscriptions(s)	6891 LG560461639

Comments: This is a Very Good Diamond was created by Chemical Vapor Deposition (CVD) growth process.

Type IIA