



**ELECTRONIC COPY**

## LABORATORY GROWN DIAMOND REPORT

October 17, 2024	
IGI Report Number	LG660446239
Description	LABORATORY GROWN DIAMOND
Shape and Cutting Style	EMERALD CUT
Measurements	9.82 X 7.03 X 4.56 MM

## GRADING RESULTS

Carat Weight	3.07 CARATS
Color Grade	E
Clarity Grade	VS 2

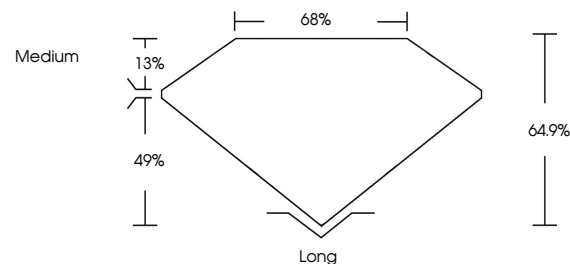
### ADDITIONAL GRADING INFORMATION

Polish	EXCELLENT
Symmetry	EXCELLENT
Fluorescence	NONE
Inscription(s)	 LG660446239

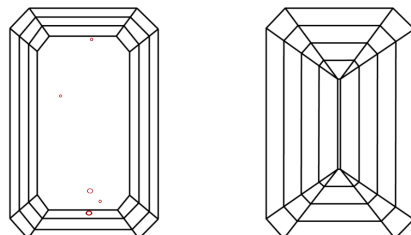
Comments: This Laboratory Grown Diamond was created by Chemical Vapor Deposition (CVD) growth process.  
Type IIa

LG660446239  
Report verification at [igi.org](https://igi.org)

## PROPORTIONS

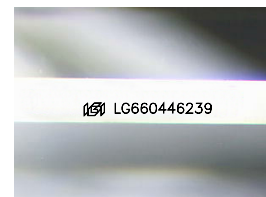


## CLARITY CHARACTERISTICS



### KEY TO SYMBOLS

Red symbols indicate internal characteristics.  
Green symbols indicate external characteristics.



Sample Image Used

## COLOR

D E F G H I J Faint Very Light Light

## CLARITY

IF	VVS <sup>1-2</sup>	VS <sup>1-2</sup>	SI <sup>1-2</sup>	I <sup>1-3</sup>
Internally Flawless	Very Very Slightly Included	Very Slightly Included	Slightly Included	Included



© IGI 2020, International Gemological Institute

FD - 10 20

**www.igi.org**

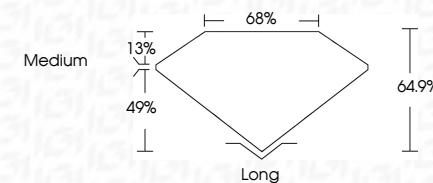
## LABORATORY GROWN DIAMOND REPORT



October 17, 2024	
IGI Report Number	LG660446239
Description	LABORATORY GROWN DIAMOND
Shape and Cutting Style	EMERALD CUT
Measurements	9.82 X 7.03 X 4.56 MM

## GRADING RESULTS

Carat Weight	3.07 CARATS
Color Grade	E
Clarity Grade	VS 2



### ADDITIONAL GRADING INFORMATION

Polish	EXCELLENT
Symmetry	EXCELLENT
Fluorescence	NONE
Inscription(s)	 LG660446239
Comments: This Laboratory Grown Diamond was created by Chemical Vapor Deposition (CVD) growth process.	
Type IIa	



October 17, 2024  
GI Report No LG660446239

3.07 CARATS	3.07 CARATS
VS 2	VS 2
64.9%	64.9%
68%	68%
Medium	Medium
Long	Long
EXCELLENT	EXCELLENT
EXCELLENT	EXCELLENT
NONE	NONE

**Comments:**  
This Laboratory Grown Diamond was  
created by Chemical Vapor Deposition  
(CVD) growth process.