



ELECTRONIC COPY

LABORATORY GROWN DIAMOND REPORT

October 16, 2024
IGI Report Number LG660423559
Description LABORATORY GROWN DIAMOND
Shape and Cutting Style EMERALD CUT
Measurements 11.67 X 8.15 X 5.47 MM

GRADING RESULTS

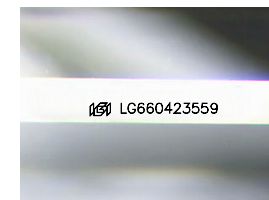
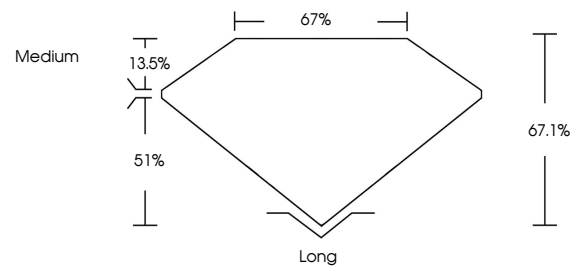
Carat Weight 5.09 CARATS
Color Grade E
Clarity Grade VS 1

ADDITIONAL GRADING INFORMATION

Polish EXCELLENT
Symmetry EXCELLENT
Fluorescence NONE
Inscription(s) IGI LG660423559

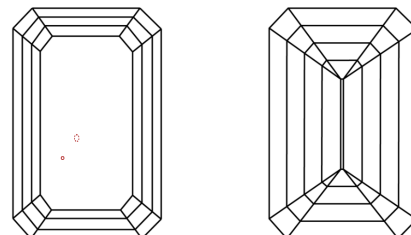
Comments: This Laboratory Grown Diamond was created by Chemical Vapor Deposition (CVD) growth process.
Type IIa

PROPORTIONS



Sample Image Used

CLARITY CHARACTERISTICS



KEY TO SYMBOLS

Red symbols indicate internal characteristics.
Green symbols indicate external characteristics.

COLOR

D E F G H I J Faint Very Light Light

CLARITY

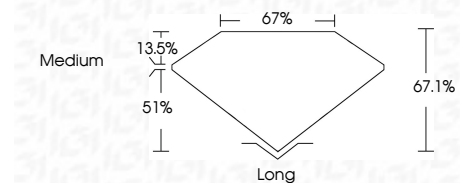
IF VS 1-2 VS 1-2 SI 1-2 I 1-3
Internally Flawless Very Very Slightly Included Very Slightly Included Slightly Included Included



October 16, 2024
IGI Report Number LG660423559
Description LABORATORY GROWN DIAMOND
Shape and Cutting Style EMERALD CUT
Measurements 11.67 X 8.15 X 5.47 MM

GRADING RESULTS

Carat Weight 5.09 CARATS
Color Grade E
Clarity Grade VS 1



ADDITIONAL GRADING INFORMATION

Polish EXCELLENT
Symmetry EXCELLENT
Fluorescence NONE
Inscription(s) IGI LG660423559
Comments: This Laboratory Grown Diamond was created by Chemical Vapor Deposition (CVD) growth process.
Type IIa



IGI



October 16, 2024
IGI Report No. LG660423559
EMERALD CUT
11.67 X 8.15 X 5.47 MM
5.09 CARATS
Color Grade E
Clarity Grade VS 1
Depth 67.1%
Table 67%
Girdle Medium
Culet Long
Polish EXCELLENT
Symmetry EXCELLENT
Fluorescence NONE
Inscription(s) IGI LG660423559
Comments: This Laboratory Grown Diamond was created by Chemical Vapor Deposition (CVD) growth process.
Type IIa