



ELECTRONIC COPY

LABORATORY GROWN DIAMOND REPORT

October 16, 2024	
IGI Report Number	LG660401440
Description	LABORATORY GROWN DIAMOND
Shape and Cutting Style	SQUARE EMERALD CUT
Measurements	8.87 X 8.82 X 5.69 MM

GRADING RESULTS

Carat Weight	4.10 CARATS
Color Grade	E
Clarity Grade	VS 1

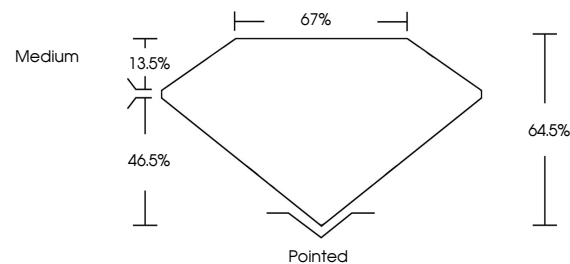
ADDITIONAL GRADING INFORMATION

Polish	EXCELLENT
Symmetry	EXCELLENT
Fluorescence	NONE
Inscription(s)	16 LG660401440

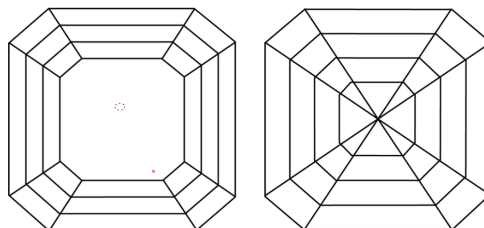
Comments: This Laboratory Grown Diamond was created by Chemical Vapor Deposition (CVD) growth process.
Type IIa

LG660401440
Report verification at igi.org

PROPORTIONS

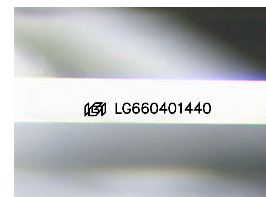


CLARITY CHARACTERISTICS



KEY TO SYMBOLS

Red symbols indicate internal characteristics.
Green symbols indicate external characteristics.



Sample Image Used

COLOR

D E F G H I J Faint Very Light Light

CLARITY

IF	VVS ¹⁻²	VS ¹⁻²	SI ¹⁻²	I ¹⁻³
Internally Flawless	Very Very Slightly Included	Very Slightly Included	Slightly Included	Included



© IGI 2020, International Gemological Institute

FD - 10 20

www.igi.org

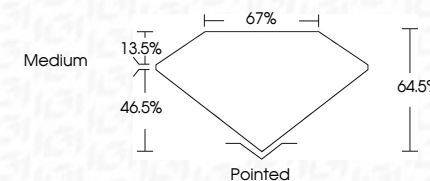
LABORATORY GROWN DIAMOND REPORT



October 16, 2024	
IGI Report Number	LG660401440
Description	LABORATORY GROWN DIAMOND
Shape and Cutting Style	SQUARE EMERALD CUT
Measurements	8.87 X 8.82 X 5.69 MM

GRADING RESULTS

Carat Weight	4.10 CARATS
Color Grade	E
Clarity Grade	VS 1



ADDITIONAL GRADING INFORMATION

Polish	EXCELLENT
Symmetry	EXCELLENT
Fluorescence	NONE
Inscription(s)	 LG660401440
<p>Comments: This Laboratory Grown Diamond was created by Chemical Vapor Deposition (CVD) growth process.</p> <p>Type IIa</p>	



October 16, 2024	4.10 CARATS	E	VS 1	Pointed	NONE	689 LG56040140
GL Report No: LG560401440			64.5%	EXCELLENT		
SQUARE EMERALD CUT			07%	EXCELLENT		
18.7 x 8.82 x 5.69 MM			Medium			
Color Weight						
Color Grade						
Clarity Grade						
Depth						
Table						
Girdle						
Culet						
Polish						
Symmetry						
Fluorescence						
Inscriptions(s)						

Comments: This is a Very Green Diamond was created by Chemical Vapor Deposition (CVD) growth process.

Type IIa