



ELECTRONIC COPY

LABORATORY GROWN DIAMOND REPORT

October 16, 2024  
IGI Report Number LG660401219  
Description LABORATORY GROWN DIAMOND  
Shape and Cutting Style CUT CORNERED RECTANGULAR MODIFIED BRILLIANT  
Measurements 9.61 X 6.63 X 4.46 MM

GRADING RESULTS

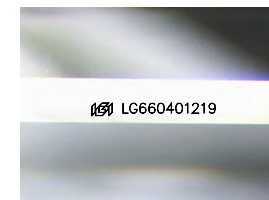
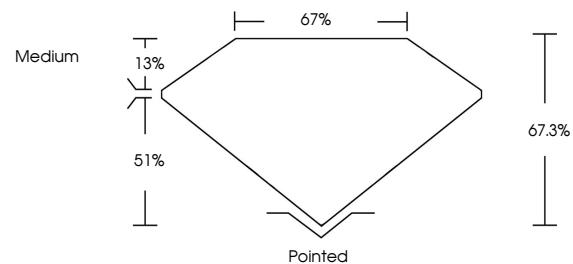
Carat Weight 2.44 CARATS  
Color Grade E  
Clarity Grade VS 1

ADDITIONAL GRADING INFORMATION

Polish EXCELLENT  
Symmetry EXCELLENT  
Fluorescence NONE  
Inscription(s) LG660401219

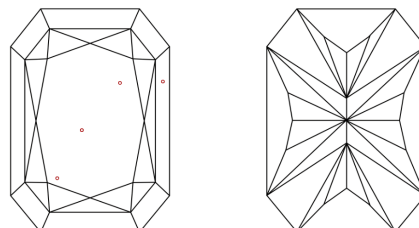
Comments: This Laboratory Grown Diamond was created by Chemical Vapor Deposition (CVD) growth process.  
Type IIa

PROPORTIONS



Sample Image Used

CLARITY CHARACTERISTICS



KEY TO SYMBOLS

Red symbols indicate internal characteristics.  
Green symbols indicate external characteristics.

COLOR

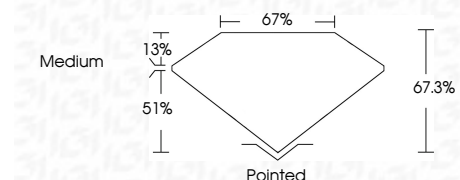
D E F G H I J Faint Very Light Light

CLARITY

IF	VS <sup>1-2</sup>	VS <sup>1-2</sup>	SI <sup>1-2</sup>	I <sup>1-3</sup>
Internally Flawless	Very Very Slightly Included	Very Slightly Included	Slightly Included	Included



October 16, 2024  
IGI Report Number LG660401219  
Description LABORATORY GROWN DIAMOND  
Shape and Cutting Style CUT CORNERED RECTANGULAR MODIFIED BRILLIANT  
Measurements 9.61 X 6.63 X 4.46 MM  
GRADING RESULTS  
Carat Weight 2.44 CARATS  
Color Grade E  
Clarity Grade VS 1



ADDITIONAL GRADING INFORMATION

Polish EXCELLENT  
Symmetry EXCELLENT  
Fluorescence NONE  
Inscription(s) LG660401219  
Comments: This Laboratory Grown Diamond was created by Chemical Vapor Deposition (CVD) growth process.  
Type IIa



IGI



October 16, 2024  
IGI Report No LG660401219  
CUT CORNERED RECT. MODIFIED BRILLIANT  
9.61 X 6.63 X 4.46 MM  
2.44 CARATS  
E  
VS 1  
67.3%  
67%  
Medium  
Pointed  
EXCELLENT  
EXCELLENT  
NONE  
None  
 LG660401219

Comments: This Laboratory Grown Diamond was created by Chemical Vapor Deposition (CVD) growth process.  
Type IIa